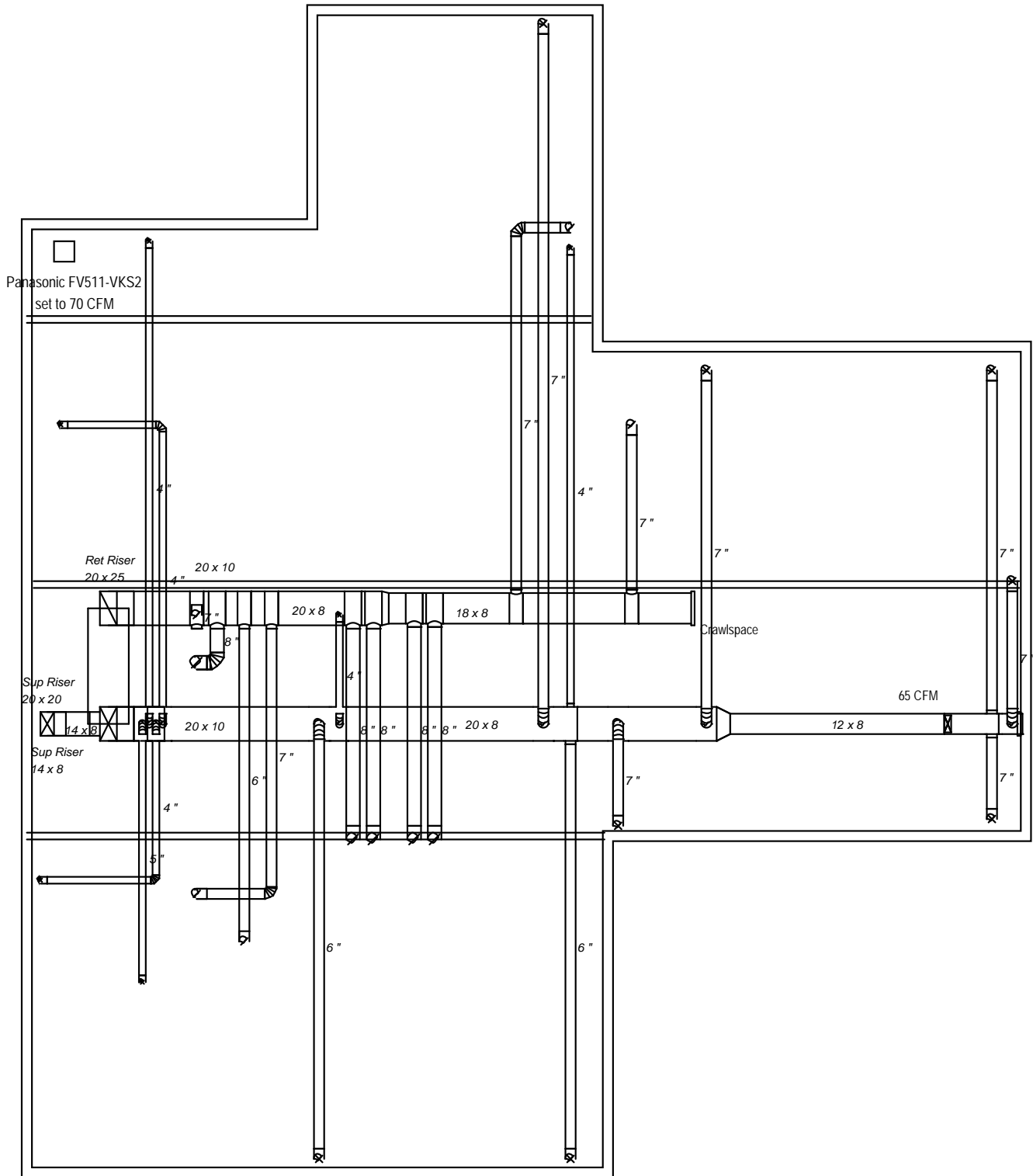


Crawlspace detail

| NO. | DESCRIPTION |
|-----|-------------|
| | |
| | |
| | |
| | |
| | |
| | |
| | |
| | |
| | |
| | |



Crawlspace



Job #: 2349 Forest Lane
Performed by Rockview Designs (MM) for:
Elevation Builders
2419 Forest Lane
Driggs, ID 83452

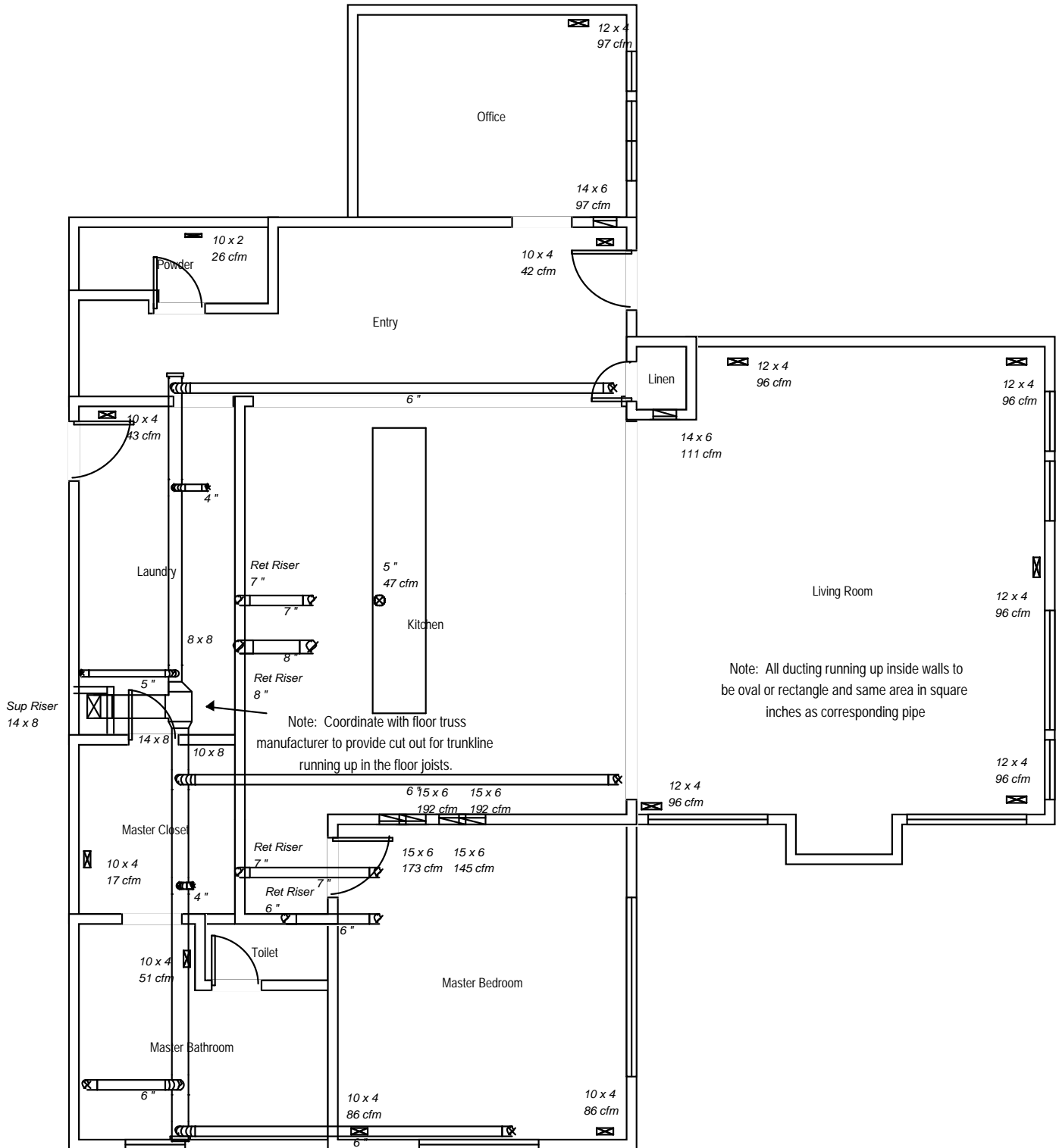
Rockview Designs

Scale: 1 : 88

Page 1
Comfort Builder by Wrightsoft
19.0.15 RSU30090
2020-Apr-12 18:31:25
...e\663 Dry Creek Trail - Copy.rup



Main Level



Job #: 2349 Forest Lane
Performed by Rockview Designs (MM) for:
Elevation Builders
2419 Forest Lane
Driggs, ID 83452

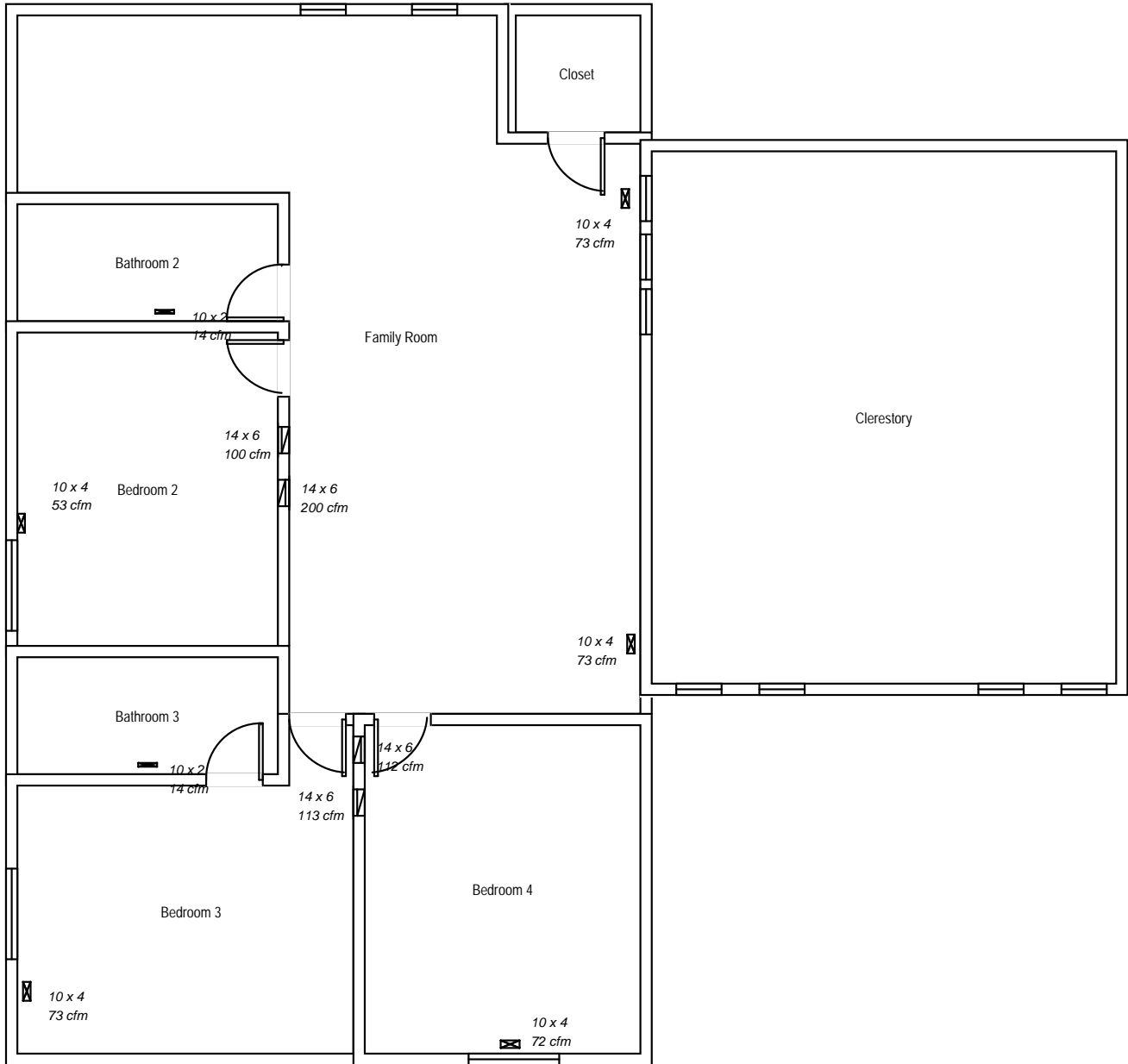
Rockview Designs

Scale: 1 : 88

Page 2
Comfort Builder by Wrightsoft
19.0.15 RSU30090
2020-Apr-12 18:31:25
...e\663 Dry Creek Trail - Copy.rup



Second Level





N92ESN

Product Specifications

Up to 92.1% AFUE, Single-Stage, Gas Furnace

EASIER TO SELL

- Up to 92.1% AFUE in upflow, horizontal, and downflow positions
- Single-stage gas valve and fixed-speeds, constant torque ECM.
- Cabinet air leakage less than 2.0% at 1.0 in. W.C. and cabinet air leakage less than 1.4% at 0.5 in. W.C. when tested in accordance with ASHRAE standard 193
- Approved for Manufactured Housing/Mobile Home applications with accessory (order separately)
- Low NOx units are designed for California installations and meet 40 ng/J NOx emissions. Can be installed in air quality management districts with a 40 ng/J NOx emissions requirement.

TOUGHER

- Flame roll-out sensors standard
- Adjustable heating blower OFF delay
- Factory set blower ON delay
- RPJ® primary heat exchanger
- Stainless steel secondary heat exchanger
- High temperature limit control prevents overheating
- Direct ignition with Silicon Nitride ignitor
- High quality, corrosion-resistant, prepainted steel cabinet

EASIER TO INSTALL AND SERVICE

- Direct vent (2-pipe), single-pipe venting or ventilated combustion air
- 24 VAC humidifier terminal & electronic air cleaner terminal
- 35" (889mm) high, for ease of installation
- Simplified, factory installed internal condensate drain system
- Innovative knobs for easy door removal and secure attachment
- Factory shipped for natural gas, with propane gas conversion kits available
- Four position – upflow/downflow/horizontal (left/right) installation
- At least twelve different venting configurations
- Through the casing flue pipe for counterflow or horizontal applications with accessory (order separately)
- Concentric vent available
- Self diagnostics with super bright LED
- Slide out heat exchanger and blower assembly

LIMITED WARRANTY *

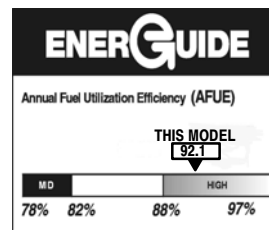
- 20 year heat exchanger limited warranty
- 5 year parts limited warranty
 - With timely registration, an additional 5 year parts limited warranty
- * For residential applications only. See warranty certificate for complete details and restrictions, including warranty coverage for other applications.



Illustrations and photographs are only representative. Some product models may vary.

WARNING

CARBON MONOXIDE POISONING AND FIRE HAZARD
 Failure to follow this warning could result in personal injury, death, and/or property damage.
 This furnace is not designed for use in recreation vehicles or outdoors. This furnace is designed for use in manufactured (Mobile) homes when an optional Mobile Home accessory kit is installed.
 Failure to follow this warning could result in personal injury, death, and/or property damage.



Use of the AHRI Certified TM Mark indicates a manufacturer's participation in the program. For verification of certification for individual products, go to www.ahridirectory.org.

| Model Number | Input (MBTUH) | Efficiency AFUE | | Cooling Capacity CFM range @ .5 in. w.c. (125 Pa) | Dimensions H x W x D Inches (Millimeters) | Shipping Wt. Lbs (Kg) |
|----------------|---------------|-----------------|----------|---|---|-----------------------|
| | | Upflow/Hz | Downflow | | | |
| N92ESN0401410A | 40,000 | 92.1% | 92.1% | 290 – 985 | 35 x 14-3/16 x 29-1/2 (889 x 361 x 750) | 112 (50.8) |
| N92ESN0401712A | 40,000 | 92.1% | 92.1% | 350 – 985 | 35 x 17-1/2 x 29-1/2 (889 x 445 x 750) | 122.5 (55.6) |
| N92ESN0601412A | 60,000 | 92.1% | 92.1% | 450 – 1035 | 35 x 14-3/16 x 29-1/2 (889 x 361 x 750) | 122 (55.3) |
| N92ESN0601714A | 60,000 | 92.1% | 92.1% | 535 – 1190 | 35 x 17-1/2 x 29-1/2 (889 x 445 x 750) | 132 (59.9) |
| N92ESN0801716A | 80,000 | 92.1% | 92.1% | 450 – 1365 | 35 x 17-1/2 x 29-1/2 (889 x 445 x 750) | 142 (64.4) |
| N92ESN0802120A | 80,000 | 92.1% | 92.1% | 940 – 1815 | 35 x 21 x 29-1/2 (889 x 533 x 750) | 150 (68.0) |
| N92ESN1002120A | 100,000 | 92.1% | 92.1% | 945 – 1850 | 35 x 21 x 29-1/2 (889 x 533 x 750) | 160 (72.6) |
| N92ESN1202420A | 120,000 | 92.1% | 92.1% | 805 – 1850 | 35 x 24-1/2 x 29-1/2 (889 x 622 x 750) | 183 (83.0) |

AIR DELIVERY – CFM (with filter)

| FURNACE SIZE | RETURN–AIR CONNECTION | SPEED TAPS | FUNCTION | EXTERNAL STATIC PRESSURE (IN.W.C.) | | | | | | | | | |
|--------------|------------------------------------|------------|--------------------------------------|------------------------------------|------|------|------|------|------|------|------|------|------|
| | | | | 0.10 | 0.20 | 0.30 | 0.40 | 0.50 | 0.60 | 0.70 | 0.80 | 0.90 | 1.00 |
| 0401410 | SIDE/ BOTTOM | Gray | Cooling. Do not use for heating. | 1120 | 1085 | 1055 | 1015 | 985 | 950 | 915 | 880 | 850 | 815 |
| | | Yellow | Cooling. Do not use for heating. | 925 | 885 | 850 | 810 | 775 | 735 | 695 | 660 | 620 | 580 |
| | | Blue | Heating or alt Cooling | 765 | 725 | 685 | 640 | 605 | 565 | 525 | 475 | 430 | 375 |
| | | Orange | Alt Cooling or alt Heating | 750 | 710 | 665 | 625 | 585 | 545 | 500 | 455 | 405 | 350 |
| | | Red | Alt Cooling. Do not use for heating. | 510 | 435 | 400 | 345 | 290 | 230 | 190 | 145 | –7 | –7 |
| 0401712 | SIDE/ BOTTOM | Gray | Cooling. Do not use for heating. | 1120 | 1090 | 1055 | 1020 | 985 | 950 | 915 | 875 | 840 | 805 |
| | | Yellow | Cooling. Do not use for heating. | 910 | 880 | 845 | 800 | 760 | 720 | 680 | 640 | 595 | 555 |
| | | Orange | Alt Cooling or alt Heating | 835 | 795 | 760 | 720 | 680 | 630 | 585 | 540 | 505 | 475 |
| | | Blue | Heating or alt Cooling | 740 | 700 | 660 | 610 | 565 | 520 | 475 | 440 | 405 | 365 |
| | | Red | Alt Cooling. Do not use for heating. | 555 | 500 | 445 | 395 | 350 | 315 | 260 | 205 | –7 | –7 |
| 0601412 | SIDE/ BOTTOM | Gray | Cooling. Do not use for heating. | 1165 | 1140 | 1110 | 1080 | 1035 | 1000 | 960 | 920 | 870 | 825 |
| | | Blue | Heating or alt Cooling | 1105 | 1085 | 1050 | 1010 | 975 | 930 | 890 | 845 | 795 | 755 |
| | | Yellow | Alt Cooling or alt Heating | 1040 | 1000 | 960 | 920 | 880 | 840 | 785 | 740 | 690 | 640 |
| | | Orange | Alt Cooling or alt Heating | 840 | 795 | 750 | 705 | 655 | 610 | 555 | 500 | 450 | 395 |
| | | Red | Alt Cooling. Do not use for heating. | 745 | 615 | 555 | 510 | 450 | 390 | 340 | 290 | 230 | 195 |
| 0601714 | SIDE/ BOTTOM | Gray | Cooling. Do not use for heating. | 1335 | 1300 | 1275 | 1230 | 1190 | 1135 | 1090 | 1040 | 985 | 925 |
| | | Yellow | Alt Cooling or alt Heating | 1170 | 1135 | 1095 | 1045 | 995 | 940 | 890 | 825 | 770 | 700 |
| | | Blue | Heating or alt Cooling | 1010 | 965 | 910 | 855 | 800 | 735 | 675 | 615 | 555 | 505 |
| | | Orange | Alt Cooling or alt Heating | 960 | 905 | 855 | 800 | 740 | 675 | 615 | 555 | 505 | 460 |
| | | Red | Alt Cooling. Do not use for heating. | 910 | 735 | 675 | 605 | 535 | 485 | 430 | 375 | 330 | 265 |
| 0801716 | SIDE/ BOTTOM | Gray | Cooling. Do not use for heating. | 1545 | 1505 | 1460 | 1420 | 1365 | 1320 | 1275 | 1225 | 1180 | 1135 |
| | | Blue | Heating or alt Cooling | 1375 | 1330 | 1275 | 1225 | 1175 | 1125 | 1075 | 1025 | 970 | 920 |
| | | Yellow | Alt Cooling or alt Heating | 1195 | 1140 | 1090 | 1040 | 985 | 930 | 875 | 815 | 765 | 705 |
| | | Orange | Alt Cooling. Do not use for heating. | 1015 | 955 | 900 | 845 | 780 | 730 | 670 | 615 | 550 | 490 |
| | | Red | Alt Cooling. Do not use for heating. | 945 | 735 | 575 | 520 | 450 | 375 | 325 | 260 | –7 | –7 |
| 0802120 | BOTTOM or TWO– SIDES 5, 6 | Gray | Cooling. Do not use for heating. | 2020 | 1965 | 1920 | 1865 | 1815 | 1760 | 1705 | 1650 | 1595 | 1545 |
| | | Yellow | Alt Cooling or alt Heating | 1650 | 1590 | 1535 | 1475 | 1425 | 1370 | 1315 | 1260 | 1205 | 1145 |
| | | Blue | Heating or alt Cooling | 1495 | 1430 | 1365 | 1310 | 1260 | 1200 | 1145 | 1085 | 1030 | 970 |
| | | Orange | Alt Cooling or alt Heating | 1420 | 1355 | 1290 | 1235 | 1175 | 1120 | 1060 | 1005 | 945 | 890 |
| | | Red | Alt Cooling. Do not use for heating. | 1200 | 1120 | 1060 | 995 | 940 | 875 | 810 | 750 | 685 | 625 |
| 1002120 | BOTTOM or TWO– SIDES 5, 6 | Gray | Cooling. Do not use for heating. | 2060 | 2010 | 1955 | 1905 | 1850 | 1800 | 1750 | 1690 | 1630 | 1565 |
| | | Blue | Heating or alt Cooling | 1730 | 1675 | 1620 | 1565 | 1510 | 1455 | 1385 | 1325 | 1270 | 1210 |
| | | Yellow | Alt Cooling or alt Heating | 1685 | 1630 | 1570 | 1515 | 1460 | 1410 | 1345 | 1280 | 1225 | 1170 |
| | | Orange | Alt Cooling or alt Heating | 1445 | 1370 | 1310 | 1250 | 1185 | 1115 | 1055 | 1005 | 950 | 875 |
| | | Red | Alt Cooling. Do not use for heating. | 1235 | 1155 | 1090 | 1020 | 945 | 900 | 835 | 755 | 690 | 635 |
| 1202420 | BOTTOM or TWO– SIDES 5, 6 | Gray | Cooling. Do not use for heating. | 2070 | 2020 | 1965 | 1910 | 1850 | 1790 | 1725 | 1660 | 1605 | 1550 |
| | | Blue | Heating or alt Cooling | 1795 | 1735 | 1680 | 1620 | 1560 | 1495 | 1440 | 1375 | 1315 | 1255 |
| | | Yellow | Alt Cooling or alt Heating | 1465 | 1400 | 1340 | 1270 | 1210 | 1150 | 1090 | 1030 | 950 | 880 |
| | | Orange | Alt Cooling. Do not use for heating. | 1295 | 1235 | 1165 | 1095 | 1030 | 970 | 905 | 825 | 760 | 700 |
| | | Red | Alt Cooling. Do not use for heating. | 1095 | 1020 | 945 | 875 | 805 | 730 | 660 | 585 | 525 | 465 |

NOTE:

1. A filter is required for each return–air inlet. Airflow performance includes a 3/4–in. (19 mm) washable filter media such as contained in a factory–authorized accessory filter rack. See accessory list in sheet. To determine airflow performance without this filter, assume an additional 0.1 in. w.c. available external static pressure.
2. **ADJUST THE BLOWER SPEED TAPS AS NECESSARY FOR THE PROPER AIR TEMPERATURE RISE FOR EACH INSTALLATION.**
3. The “Function” column identifies with speed taps can be used for heating. Shaded areas indicate that this airflow range is **BELOW THE RANGE ALLOWED FOR HEATING OPERATION. THESE AIRFLOW RANGES MAY ONLY BE USED FOR COOLING.**
4. If the same motor speed tap is needed for heating and cooling, a Jumper Wire accessory kit is available, see sheet for the current Jumper Wire accessory part number. Reference the “Start–up, Adjustments, and Safety Check” section in the installation instructions for further Jumper Wire instructions.
5. Airflows over 1800 CFM require bottom return, two–side return, or bottom and side return. A minimum filter size of 20” x 25” (508 x 635 mm) is required.
6. For upflow applications, air entering from one side into both the side of the furnace and a return air base counts as a side and bottom return.
7. The “–” entry indicates an unstable operating condition.

HORIZONTAL EVAPORATOR COILS

ALL CASED N COIL MODELS

- 2 thru 5 Tons
- Available for environmentally sound R-410A systems
- Bolt-on TXV metering device factory installed on all models (equalizer tube brazed in)
- Two condensate drain connections
- Cabinet widths match flush with ICP 17-1/2", 21" and 24-1/2" gas furnace cabinets (field fabricated transitions required to match other ICP furnace models)
- Removable front access panel
- Hemmed flanges for safer handling
- Foil faced insulation
- Non-sweat cabinet, even at extreme conditions
- Cabinets meet or exceed 2% air leakage codes
- Sturdy, pre-painted steel cabinet
- Horizontal installation
- Aluminum hairpin/return-bend/fin "N" coil with the latest high-tech fin design



Use of the AHRI Certified TM Mark indicates a manufacturer's participation in the program. For verification of certification for individual products, go to www.ahridirectory.org.



WARRANTY*

- 5 year parts limited warranty
 - With timely registration, an additional 5 year parts limited warranty
- * Applies to original purchaser/homeowner, some limitations may apply. See Warranty certificate for complete details.

| COIL STATIC PRESSURE DROP (in. w.c.) | | | | | | | | | | | | | | | | | | | | |
|--------------------------------------|--------------|-------|-------|-------|-------|-------|-------|-------|-------|-------|-------|-------|-------|-------|-------|-------|-------|-------|-------|--|
| UNIT SIZE | Standard CFM | | | | | | | | | | | | | | | | | | | |
| | 400 | 500 | 600 | 700 | 800 | 900 | 1000 | 1100 | 1200 | 1300 | 1400 | 1500 | 1600 | 1700 | 1800 | 1900 | 2000 | 2100 | 2200 | |
| 24 | Dry | | | | | | | | | | | | | | | | | | | |
| | 0.048 | 0.068 | 0.090 | 0.112 | 0.140 | 0.170 | 0.203 | | | | | | | | | | | | | |
| | Wet | | | | | | | | | | | | | | | | | | | |
| 30 | 0.064 | 0.091 | 0.122 | 0.150 | 0.188 | 0.224 | 0.263 | | | | | | | | | | | | | |
| | Dry | | | | | | | | | | | | | | | | | | | |
| | 0.042 | 0.060 | 0.080 | 0.102 | 0.128 | 0.157 | 0.188 | 0.222 | 0.259 | | | | | | | | | | | |
| 31 | Wet | | | | | | | | | | | | | | | | | | | |
| | 0.055 | 0.076 | 0.104 | 0.127 | 0.158 | 0.190 | 0.225 | 0.266 | 0.309 | | | | | | | | | | | |
| | Dry | | | | | | | | | | | | | | | | | | | |
| 36 | 0.031 | 0.046 | 0.063 | 0.083 | 0.105 | 0.130 | 0.156 | 0.193 | 0.230 | | | | | | | | | | | |
| | Wet | | | | | | | | | | | | | | | | | | | |
| | 0.039 | 0.056 | 0.075 | 0.097 | 0.121 | 0.149 | 0.179 | 0.212 | 0.249 | | | | | | | | | | | |
| 42 | Dry | | | | | | | | | | | | | | | | | | | |
| | 0.043 | 0.061 | 0.082 | 0.103 | 0.128 | 0.157 | 0.189 | 0.221 | 0.259 | 0.299 | 0.341 | | | | | | | | | |
| | Wet | | | | | | | | | | | | | | | | | | | |
| 43 | 0.056 | 0.079 | 0.107 | 0.133 | 0.166 | 0.200 | 0.236 | 0.276 | 0.315 | 0.361 | 0.413 | | | | | | | | | |
| | Dry | | | | | | | | | | | | | | | | | | | |
| | 0.030 | 0.041 | 0.054 | 0.066 | 0.082 | 0.099 | 0.118 | 0.137 | 0.158 | 0.180 | 0.205 | 0.231 | 0.259 | | | | | | | |
| 48 | Wet | | | | | | | | | | | | | | | | | | | |
| | 0.043 | 0.059 | 0.078 | 0.101 | 0.126 | 0.153 | 0.181 | 0.207 | 0.234 | 0.260 | 0.288 | 0.319 | 0.354 | | | | | | | |
| | Dry | | | | | | | | | | | | | | | | | | | |
| 60 | | 0.040 | 0.052 | 0.066 | 0.081 | 0.098 | 0.117 | 0.137 | 0.156 | 0.183 | 0.205 | 0.233 | | | | | | | | |
| | Wet | | | | | | | | | | | | | | | | | | | |
| | | 0.049 | 0.062 | 0.079 | 0.096 | 0.114 | 0.138 | 0.162 | 0.189 | 0.216 | 0.239 | 0.27 | | | | | | | | |
| 61 | Dry | | | | | | | | | | | | | | | | | | | |
| | | | 0.047 | 0.060 | 0.075 | 0.092 | 0.110 | 0.130 | 0.152 | 0.176 | 0.204 | 0.230 | 0.256 | 0.284 | 0.318 | | | | | |
| | Wet | | | | | | | | | | | | | | | | | | | |
| 61 | | | 0.053 | 0.067 | 0.085 | 0.104 | 0.125 | 0.147 | 0.172 | 0.200 | 0.228 | 0.259 | 0.292 | 0.327 | 0.365 | | | | | |
| | Dry | | | | | | | | | | | | | | | | | | | |
| | | | | | 0.062 | 0.073 | 0.084 | 0.097 | 0.111 | 0.126 | 0.138 | 0.154 | 0.172 | 0.190 | 0.210 | 0.228 | 0.251 | 0.273 | 0.293 | |
| 61 | Wet | | | | | | | | | | | | | | | | | | | |
| | | | | | 0.082 | 0.096 | 0.112 | 0.129 | 0.145 | 0.163 | 0.171 | 0.191 | 0.212 | 0.235 | 0.258 | 0.283 | 0.310 | 0.336 | 0.366 | |
| | Dry | | | | | | | | | | | | | | | | | | | |
| 61 | | | | | | | | | | 0.196 | 0.216 | 0.238 | 0.259 | 0.286 | 0.312 | 0.336 | 0.363 | 0.390 | | |
| | Wet | | | | | | | | | | | | | | | | | | | |
| | | | | | | | | | | | 0.208 | 0.233 | 0.259 | 0.281 | 0.307 | 0.339 | 0.368 | 0.400 | 0.431 | |

EFFICIENT 13 SEER AIR CONDITIONER ENVIRONMENTALLY SOUND R-410A REFRIGERANT 1-1/2 THRU 5 TONS SPLIT SYSTEM 208/230 Volt, 1-phase, 60 Hz

REFRIGERATION CIRCUIT

- Scroll compressors on all models
- Filter-Drier supplied with every unit for field installation
- Copper tube / aluminum fin coil

EASY TO INSTALL AND SERVICE

- Easy Access service valves on all models
- External high and low refrigerant service ports
- Only two screws to access control panel
- Factory charged with R-410A refrigerant

BUILT TO LAST

- Baked-on powder coat finish over galvanized steel
- Post-painted (black) coil fins
- Coated, weather-resistant cabinet screws
- Coated inlet grille with 2" (51mm) spacing standard, alternate models available with 3/8" (10mm) grille spacing for extra protection (hail guard)

WARRANTY*

- 5 year compressor limited warranty
- 5 year parts limited warranty (including compressor and coil)
 - With timely registration, an additional 5 year parts limited warranty (including compressor and coil)

* For residential applications only. See warranty certificate for complete details and restrictions, including warranty coverage for other applications.



Use of the AHRI Certified TM Mark indicates a manufacturer's participation in the program. For verification of certification for individual products, go to www.ahridirectory.org.



| Model Number | Size (tons) | Nominal BTU/hr | Min. Circuit Ampacity | Max. Fuse or Breaker | Operating Dimensions height x width x depth in. (mm) | Ship / Operating Weight lbs. (kg) |
|--------------|-------------|----------------|-----------------------|----------------------|--|-----------------------------------|
| N4A318*KN | 1-1/2 | 18,000 | 12.3 | 20 | 25-5/16 x 23-1/8 x 23-1/8 (643 x 587 x 587) | 130 / 107(59 / 49) |
| N4A324*KN | 2 | 24,000 | 14.8 | 25 | | 134 / 110(61 / 50) |
| N4A330*KN | 2-1/2 | 30,000 | 16.8 | 25 | 28-11/16 x 23-1/8 x 23-1/8 (729 x 587 x 587) | 136 / 111(62 / 50) |
| N4A336*KN | 3 | 36,000 | 19.2 | 30 | 31-13/16 x 25-3/4 x 25-3/4 (808 x 654 x 654) | 169 / 144(77 / 66) |
| N4A342*KN | 3-1/2 | 42,000 | 23.5 | 40 | 32-5/16 x 31-3/16 x 31-3/16 (821 x 792 x 792) | 218 / 190(99 / 86) |
| N4A348*KN | 4 | 48,000 | 24.3 | 40 | 35-3/4 x 31-3/16 x 31-3/16 (908 x 792 x 792) | 224 / 186(102 / 84) |
| N4A360*KN | 5 | 60,000 | 29.0 | 50 | 28-15/16 x 31-3/16 x 31-3/16 (735 x 792 x 792) | 232 / 199(106 / 91) |

* A = 2" (51mm) spacing inlet grille or
G = 3/8" (10mm) spacing inlet grille



Project Summary
Entire House
Rockview Designs

Job: 2349 Forest Lane
 Date:
 By: Rockview Designs (MM)

Project Information

For: Elevation Builders
 2419 Forest Lane, Driggs, ID 83452

Notes:

Design Information

Weather: Driggs, Idaho

Winter Design Conditions

Outside db -3 °F
 Inside db 72 °F
 Design TD 75 °F

Summer Design Conditions

Outside db 91 °F
 Inside db 75 °F
 Design TD 16 °F
 Daily range H
 Relative humidity 50 %
 Moisture difference -34 gr/lb

Heating Summary

Structure 39367 Btuh
 Ducts 0 Btuh
Central vent (70 cfm) 4610 Btuh
Outside air
 Humidification 5208 Btuh
 Piping 0 Btuh
 Equipment load 49185 Btuh

Sensible Cooling Equipment Load Sizing

Structure 23317 Btuh
 Ducts 0 Btuh
Central vent (70 cfm) 983 Btuh
Outside air
 Blower 0 Btuh
 Use manufacturer's data y
 Rate/swing multiplier 1.00
 Equipment sensible load 24301 Btuh

Infiltration

Method Simplified
 Construction quality Semi-tight
 Fireplaces 0

Latent Cooling Equipment Load Sizing

Structure -277 Btuh
 Ducts 0 Btuh
Central vent (70 cfm) -1288 Btuh
Outside air
 Equipment latent load 0 Btuh

| | Heating | Cooling |
|---------------------------|---------|---------|
| Area (ft ²) | 5218 | 5218 |
| Volume (ft ³) | 41637 | 41637 |
| Air changes/hour | 0.19 | 0.10 |
| Equip. AVF (cfm) | 132 | 69 |

Equipment Total Load (Sen+Lat) 24301 Btuh
 Req. total capacity at 1.00 SHR 2.0 ton

Heating Equipment Summary

Make Heil
 Trade HEIL
 Model N92ESN0802120AA2
 AHRI ref

Efficiency 92 AFUE
 Heating input 80000 Btuh
 Heating output 65504 Btuh
 Temperature rise 59 °F
 Actual air flow 1260 cfm
 Air flow factor 0.032 cfm/Btuh
 Static pressure 0.70 in H2O
 Space thermostat

Cooling Equipment Summary

Make Heil
 Trade
 Cond N4A336ASB20
 Coil ENH4X42L21A1
 AHRI ref
 Efficiency 11.0 EER, 13 SEER
 Sensible cooling 29540 Btuh
 Latent cooling 0 Btuh
 Total cooling 29540 Btuh
 Actual air flow 1205 cfm
 Air flow factor 0.052 cfm/Btuh
 Static pressure 0.80 in H2O
 Load sensible heat ratio 1.00

Bold/italic values have been manually overridden



Right-J® Worksheet
Entire House
Rockview Designs

Job: 2349 Forest Lane
Date:
By: Rockview Designs (MM)

| 1 | | Room name | | Entire House | | | | Office | | | | | | |
|----|--------------------------|---------------------|------------------------------------|------------------------|-----------------------------|-------|---|-----------------------|-------------|-------|---|-------|-------------|------|
| 2 | | Exposed wall | | 564.0 ft | | | | 35.3 ft | | | | | | |
| 3 | | Room height | | 9.5 ft | | | | 9.0 ft | | | | | | |
| 4 | | Room dimensions | | p | | | | 14.0 x 10.7 ft | | | | | | |
| 5 | | Room area | | 5218.0 ft ² | | | | 149.3 ft ² | | | | | | |
| | Ty | Construction number | U-value (Btuh/ft ² -°F) | Or | HTM (Btuh/ft ²) | | Area (ft ²) or perimeter (ft) | | Load (Btuh) | | Area (ft ²) or perimeter (ft) | | Load (Btuh) | |
| | | | | | Heat | Cool | Gross | N/P/S | Heat | Cool | Gross | N/P/S | Heat | Cool |
| 6 | W | 15B-15sfc-4 | 0.059 | n | 3.83 | 0.16 | 441 | 441 | 1687 | 72 | 0 | 0 | 0 | 0 |
| | W | R-20 Frame Wall | 0.062 | n | 4.65 | 0.44 | 798 | 782 | 3636 | 342 | 126 | 126 | 586 | 55 |
| | G | Low E 2012 | 0.320 | n | 24.00 | 11.17 | 16 | 0 | 384 | 179 | 0 | 0 | 0 | 0 |
| | W | 15B-15sfc-4 | 0.059 | e | 3.83 | 0.16 | 513 | 513 | 1962 | 83 | 0 | 0 | 0 | 0 |
| 11 | W | R-20 Frame Wall | 0.062 | e | 4.65 | 0.44 | 903 | 690 | 3209 | 302 | 96 | 60 | 279 | 26 |
| | G | Low E 2012 | 0.320 | e | 24.00 | 34.99 | 192 | 0 | 4608 | 6719 | 36 | 0 | 864 | 1260 |
| | D | DftDoor | 0.280 | e | 21.00 | 5.84 | 21 | 21 | 441 | 123 | 0 | 0 | 0 | 0 |
| | W | 15B-15sfc-4 | 0.059 | s | 3.83 | 0.16 | 441 | 441 | 1687 | 72 | 0 | 0 | 0 | 0 |
| | W | R-20 Frame Wall | 0.062 | s | 4.65 | 0.44 | 798 | 653 | 3034 | 285 | 0 | 0 | 0 | 0 |
| | G | Low E 2012 | 0.320 | s | 24.00 | 19.87 | 146 | 0 | 3492 | 2891 | 0 | 0 | 0 | 0 |
| | W | 15B-15sfc-4 | 0.059 | w | 3.83 | 0.16 | 513 | 513 | 1962 | 83 | 0 | 0 | 0 | 0 |
| | W | R-20 Frame Wall | 0.062 | w | 4.65 | 0.44 | 999 | 946 | 4399 | 413 | 96 | 96 | 446 | 42 |
| | G | Low E 2012 | 0.320 | w | 24.00 | 34.99 | 32 | 0 | 768 | 1120 | 0 | 0 | 0 | 0 |
| | D | DftDoor | 0.280 | w | 21.00 | 5.84 | 21 | 21 | 441 | 123 | 0 | 0 | 0 | 0 |
| | C | R49 Attic | 0.022 | - | 1.65 | 0.98 | 1975 | 1975 | 3259 | 1927 | 149 | 149 | 246 | 146 |
| | F | 20P-30c | 0.035 | - | 2.63 | 0.15 | 14 | 14 | 37 | 2 | 0 | 0 | 0 | 0 |
| | F | 21A-32t | 0.020 | - | 1.50 | 0.00 | 1961 | 1961 | 2942 | 0 | 0 | 0 | 0 | 0 |
| 6 | c) AED excursion | | | | | | | | | 0 | | | | 0 |
| | Envelope loss/gain | | | | | | | | 37948 | 14735 | | | 2422 | 1529 |
| 12 | a) Infiltration | | | | | | | | 8683 | 975 | | | 606 | 68 |
| | b) Room ventilation | | | | | | | | 0 | 0 | | | 0 | 0 |
| 13 | Internal gains: | | Occupants @ | 230 | | | 5 | | 1150 | 0 | | | | 0 |
| | | | Appliances/other | | | | | | 3800 | | | | | 0 |
| | Subtotal (lines 6 to 13) | | | | | | | | 39367 | 23317 | | | 3032 | 1829 |
| | Less external load | | | | | | | | 0 | 0 | | | 0 | 0 |
| | Less transfer | | | | | | | | 0 | 0 | | | 0 | 0 |
| | Redistribution | | | | | | | | 0 | 0 | | | 0 | 0 |
| 14 | Subtotal | | | | | | | | 39367 | 23317 | | | 3032 | 1829 |
| 15 | Duct loads | | | | | | 0% | 0% | 0 | 0 | -0% | 0% | 0 | 0 |
| | Total room load | | | | | | | | 39367 | 23317 | | | 3032 | 1829 |
| | Air required (cfm) | | | | | | | | 1260 | 1205 | | | 97 | 95 |

Bold/italic values have been manually overridden





Right-J® Worksheet
Entire House
Rockview Designs

Job: 2349 Forest Lane
Date:
By: Rockview Designs (MM)

| 1 | Room name | | | | Powder 13.7 ft heat/cool | | | | Entry 15.3 ft heat/cool | | | | | |
|----|---------------------------------|---------------------|------------------------------------|----|--------------------------------|-------|---|-------|-------------------------------|------|---|-------|-------------|------|
| 2 | Exposed wall | | | | 9.0 ft 1.0 x 40.7 ft | | | | 9.0 ft 1.0 x 211.3 ft | | | | | |
| 3 | Room height | | | | 40.7 ft ² | | | | 211.3 ft ² | | | | | |
| 4 | Room dimensions | | | | | | | | | | | | | |
| 5 | Room area | | | | | | | | | | | | | |
| | Ty | Construction number | U-value (Btuh/ft ² -°F) | Or | HTM (Btuh/ft ²) | | Area (ft ²) or perimeter (ft) | | Load (Btuh) | | Area (ft ²) or perimeter (ft) | | Load (Btuh) | |
| | | | | | Heat | Cool | Gross | N/P/S | Heat | Cool | Gross | N/P/S | Heat | Cool |
| 6 | W | 15B-15sfc-4 | 0.059 | n | 3.83 | 0.16 | 0 | 0 | 0 | 0 | 0 | 0 | 0 | 0 |
| | W | R-20 Frame Wall | 0.062 | n | 4.65 | 0.44 | 90 | 90 | 419 | 39 | 36 | 36 | 167 | 16 |
| | | Low E 2012 | 0.320 | n | 24.00 | 11.17 | 0 | 0 | 0 | 0 | 0 | 0 | 0 | 0 |
| | W | 15B-15sfc-4 | 0.059 | e | 3.83 | 0.16 | 0 | 0 | 0 | 0 | 0 | 0 | 0 | 0 |
| 11 | W | R-20 Frame Wall | 0.062 | e | 4.65 | 0.44 | 0 | 0 | 0 | 0 | 54 | 33 | 153 | 14 |
| | | Low E 2012 | 0.320 | e | 24.00 | 34.99 | 0 | 0 | 0 | 0 | 0 | 0 | 0 | 0 |
| | | DftDoor | 0.280 | e | 21.00 | 5.84 | 0 | 0 | 0 | 0 | 21 | 21 | 441 | 123 |
| | W | 15B-15sfc-4 | 0.059 | s | 3.83 | 0.16 | 0 | 0 | 0 | 0 | 0 | 0 | 0 | 0 |
| | W | R-20 Frame Wall | 0.062 | s | 4.65 | 0.44 | 0 | 0 | 0 | 0 | 0 | 0 | 0 | 0 |
| | | Low E 2012 | 0.320 | s | 24.00 | 19.87 | 0 | 0 | 0 | 0 | 0 | 0 | 0 | 0 |
| | W | 15B-15sfc-4 | 0.059 | w | 3.83 | 0.16 | 0 | 0 | 0 | 0 | 0 | 0 | 0 | 0 |
| | W | R-20 Frame Wall | 0.062 | w | 4.65 | 0.44 | 33 | 33 | 153 | 14 | 48 | 48 | 223 | 21 |
| | | Low E 2012 | 0.320 | w | 24.00 | 34.99 | 0 | 0 | 0 | 0 | 0 | 0 | 0 | 0 |
| | | DftDoor | 0.280 | w | 21.00 | 5.84 | 0 | 0 | 0 | 0 | 0 | 0 | 0 | 0 |
| | C | R49 Attic | 0.022 | - | 1.65 | 0.98 | 0 | 0 | 0 | 0 | 2 | 2 | 3 | 2 |
| | F | 20P-30c | 0.035 | - | 2.63 | 0.15 | 0 | 0 | 0 | 0 | 0 | 0 | 0 | 0 |
| | F | 21A-32t | 0.020 | - | 1.50 | 0.00 | 0 | 0 | 0 | 0 | 0 | 0 | 0 | 0 |
| 6 | c) AED excursion | | | | | | | | | 0 | | | | 0 |
| | Envelope loss/gain | | | | | | | | 572 | 54 | | | 988 | 176 |
| 12 | a) Infiltration | | | | | | | | 234 | 26 | | | 263 | 30 |
| | b) Room ventilation | | | | | | | | 0 | 0 | | | 0 | 0 |
| 13 | Internal gains: Occupants @ 230 | | | | | | 0 | | | 0 | 0 | | | 0 |
| | Appliances/other | | | | | | | | | 0 | | | | 0 |
| | Subtotal (lines 6 to 13) | | | | | | | | 806 | 73 | | | 1254 | 187 |
| | Less external load | | | | | | | | 0 | 0 | | | 0 | 0 |
| | Less transfer | | | | | | | | 0 | 0 | | | 0 | 0 |
| | Redistribution | | | | | | | | 0 | 0 | | | 51 | 5 |
| 14 | Subtotal | | | | | | | | 806 | 73 | | | 1305 | 192 |
| 15 | Duct loads | | | | | | -0% | 0% | 0 | 0 | -0% | 0% | 0 | 0 |
| | Total room load | | | | | | | | 806 | 73 | | | 1305 | 192 |
| | Air required (cfm) | | | | | | | | 26 | 4 | | | 42 | 10 |

Bold/italic values have been manually overridden



wrightsoft
 A HOK® / Autodesk® Building Company

Comfort Builder by Wrightsoft 19.0.15 RSU30090

...o Story Template\663 Dry Creek Trail - Copy.rup Calc = Manual Building Front faces: N

2020-Apr-12 18:31:13

Page 2



Right-J® Worksheet
Entire House
Rockview Designs

Job: 2349 Forest Lane
Date:
By: Rockview Designs (MM)

| 1 | | Room name | | | | Living Room | | | | Laundry | | | | |
|----|--------------------------|---------------------|-----------------------|-----|----------------|----------------|------------------------------|-------|-------------|---------------|------------------------------|-------|-------------|------|
| 2 | | Exposed wall | | | | 67.0 ft | | | | 17.0 ft | | | | |
| 3 | | Room height | | | | 14.0 ft | | | | 9.0 ft | | | | |
| 4 | | Room dimensions | | | | 1.0 x 503.7 ft | | | | 8.3 x 17.0 ft | | | | |
| 5 | | Room area | | | | 503.7 ft² | | | | 141.7 ft² | | | | |
| | Ty | Construction number | U-value (Btuh/ft²·°F) | Or | HTM (Btuh/ft²) | | Area (ft²) or perimeter (ft) | | Load (Btuh) | | Area (ft²) or perimeter (ft) | | Load (Btuh) | |
| | | | | | Heat | Cool | Gross | N/P/S | Heat | Cool | Gross | N/P/S | Heat | Cool |
| 6 | W | 15B-15sfc-4 | 0.059 | n | 3.83 | 0.16 | 0 | 0 | 0 | 0 | 0 | 0 | 0 | 0 |
| | W | R-20 Frame Wall | 0.062 | n | 4.65 | 0.44 | 267 | 267 | 1242 | 117 | 0 | 0 | 0 | 0 |
| | G | Low E 2012 | 0.320 | n | 24.00 | 11.17 | 0 | 0 | 0 | 0 | 0 | 0 | 0 | 0 |
| | W | 15B-15sfc-4 | 0.059 | e | 3.83 | 0.16 | 0 | 0 | 0 | 0 | 0 | 0 | 0 | 0 |
| 11 | W | R-20 Frame Wall | 0.062 | e | 4.65 | 0.44 | 354 | 261 | 1214 | 114 | 0 | 0 | 0 | 0 |
| | G | Low E 2012 | 0.320 | e | 24.00 | 34.99 | 93 | 0 | 2232 | 3254 | 0 | 0 | 0 | 0 |
| | D | DftDoor | 0.280 | e | 21.00 | 5.84 | 0 | 0 | 0 | 0 | 0 | 0 | 0 | 0 |
| | W | 15B-15sfc-4 | 0.059 | s | 3.83 | 0.16 | 0 | 0 | 0 | 0 | 0 | 0 | 0 | 0 |
| | W | R-20 Frame Wall | 0.062 | s | 4.65 | 0.44 | 294 | 178 | 828 | 78 | 0 | 0 | 0 | 0 |
| | G | Low E 2012 | 0.320 | s | 24.00 | 19.87 | 116 | 0 | 2784 | 2305 | 0 | 0 | 0 | 0 |
| | W | 15B-15sfc-4 | 0.059 | w | 3.83 | 0.16 | 0 | 0 | 0 | 0 | 0 | 0 | 0 | 0 |
| | W | R-20 Frame Wall | 0.062 | w | 4.65 | 0.44 | 18 | 18 | 84 | 8 | 153 | 132 | 614 | 58 |
| | G | Low E 2012 | 0.320 | w | 24.00 | 34.99 | 0 | 0 | 0 | 0 | 0 | 0 | 0 | 0 |
| | D | DftDoor | 0.280 | w | 21.00 | 5.84 | 0 | 0 | 0 | 0 | 21 | 21 | 441 | 123 |
| | C | R49 Attic | 0.022 | - | 1.65 | 0.98 | 515 | 515 | 849 | 502 | 0 | 0 | 0 | 0 |
| | F | 20P-30c | 0.035 | - | 2.63 | 0.15 | 14 | 14 | 37 | 2 | 0 | 0 | 0 | 0 |
| | F | 21A-32t | 0.020 | - | 1.50 | 0.00 | 0 | 0 | 0 | 0 | 0 | 0 | 0 | 0 |
| 6 | c) AED excursion | | | | | | | | | 0 | | | | 0 |
| | Envelope loss/gain | | | | | | | | 9269 | 6380 | | | 1055 | 180 |
| 12 | a) Infiltration | | | | | | | | 1777 | 200 | | | 291 | 33 |
| | b) Room ventilation | | | | | | | | 0 | 0 | | | 0 | 0 |
| 13 | Internal gains: | | Occupants @ | 230 | | | 0 | | | 0 | 0 | | | 0 |
| | | | Appliances/other | | | | | | | 900 | | | | 500 |
| | Subtotal (lines 6 to 13) | | | | | | | | 11057 | 9292 | | | 1346 | 650 |
| | Less external load | | | | | | | | 0 | 0 | | | 0 | 0 |
| | Less transfer | | | | | | | | 0 | 0 | | | 0 | 0 |
| | Redistribution | | | | | | | | 114 | 10 | | | 0 | 0 |
| 14 | Subtotal | | | | | | | | 11171 | 9302 | | | 1346 | 650 |
| 15 | Duct loads | | | | | | | | -0% | 0% | | | 0 | 0 |
| | Total room load | | | | | | | | 11171 | 9302 | | | 1346 | 650 |
| | Air required (cfm) | | | | | | | | 358 | 481 | | | 43 | 34 |

Bold/italic values have been manually overridden





Right-J® Worksheet
Entire House
Rockview Designs

Job: 2349 Forest Lane
Date:
By: Rockview Designs (MM)

| 1 | Room name | | | | Master Closet | | | | Toilet | | | | | |
|----|--------------------------|---------------------|-----------------------|----|------------------|-------|------------------------------|-------|--------------|------|------------------------------|-------|-------------|------|
| 2 | Exposed wall | | | | 9.0 ft | | | | 0 ft | | | | | |
| 3 | Room height | | | | 9.0 ft | | | | 9.0 ft | | | | | |
| 4 | Room dimensions | | | | 8.3 x 9.0 ft | | | | 6.7 x 3.3 ft | | | | | |
| 5 | Room area | | | | 75.0 ft² | | | | 22.2 ft² | | | | | |
| | Ty | Construction number | U-value (Btuh/ft²-°F) | Or | HTM (Btuh/ft²) | | Area (ft²) or perimeter (ft) | | Load (Btuh) | | Area (ft²) or perimeter (ft) | | Load (Btuh) | |
| | | | | | Heat | Cool | Gross | N/P/S | Heat | Cool | Gross | N/P/S | Heat | Cool |
| 6 | W | 15B-15sfc-4 | 0.059 | n | 3.83 | 0.16 | 0 | 0 | 0 | 0 | 0 | 0 | 0 | 0 |
| | W | R-20 Frame Wall | 0.062 | n | 4.65 | 0.44 | 0 | 0 | 0 | 0 | 0 | 0 | 0 | 0 |
| | G | Low E 2012 | 0.320 | n | 24.00 | 11.17 | 0 | 0 | 0 | 0 | 0 | 0 | 0 | 0 |
| | W | 15B-15sfc-4 | 0.059 | e | 3.83 | 0.16 | 0 | 0 | 0 | 0 | 0 | 0 | 0 | 0 |
| 11 | W | R-20 Frame Wall | 0.062 | e | 4.65 | 0.44 | 0 | 0 | 0 | 0 | 0 | 0 | 0 | 0 |
| | G | Low E 2012 | 0.320 | e | 24.00 | 34.99 | 0 | 0 | 0 | 0 | 0 | 0 | 0 | 0 |
| | D | DftDoor | 0.280 | e | 21.00 | 5.84 | 0 | 0 | 0 | 0 | 0 | 0 | 0 | 0 |
| | W | 15B-15sfc-4 | 0.059 | s | 3.83 | 0.16 | 0 | 0 | 0 | 0 | 0 | 0 | 0 | 0 |
| | W | R-20 Frame Wall | 0.062 | s | 4.65 | 0.44 | 0 | 0 | 0 | 0 | 0 | 0 | 0 | 0 |
| | G | Low E 2012 | 0.320 | s | 24.00 | 19.87 | 0 | 0 | 0 | 0 | 0 | 0 | 0 | 0 |
| | W | 15B-15sfc-4 | 0.059 | w | 3.83 | 0.16 | 0 | 0 | 0 | 0 | 0 | 0 | 0 | 0 |
| | W | R-20 Frame Wall | 0.062 | w | 4.65 | 0.44 | 81 | 81 | 377 | 35 | 0 | 0 | 0 | 0 |
| | G | Low E 2012 | 0.320 | w | 24.00 | 34.99 | 0 | 0 | 0 | 0 | 0 | 0 | 0 | 0 |
| | D | DftDoor | 0.280 | w | 21.00 | 5.84 | 0 | 0 | 0 | 0 | 0 | 0 | 0 | 0 |
| | C | R49 Attic | 0.022 | - | 1.65 | 0.98 | 0 | 0 | 0 | 0 | 0 | 0 | 0 | 0 |
| | F | 20P-30c | 0.035 | - | 2.63 | 0.15 | 0 | 0 | 0 | 0 | 0 | 0 | 0 | 0 |
| | F | 21A-32t | 0.020 | - | 1.50 | 0.00 | 0 | 0 | 0 | 0 | 0 | 0 | 0 | 0 |
| 6 | c) AED excursion | | | | | | | | | 0 | | | | 0 |
| | Envelope loss/gain | | | | | | | | 377 | 35 | | | 0 | 0 |
| 12 | a) Infiltration | | | | | | | | 154 | 17 | | | 0 | 0 |
| | b) Room ventilation | | | | | | | | 0 | 0 | | | 0 | 0 |
| 13 | Internal gains: | | | | Occupants @ | 230 | 0 | | | 0 | 0 | | | 0 |
| | | | | | Appliances/other | | | | | 0 | | | | 0 |
| | Subtotal (lines 6 to 13) | | | | | | | | 531 | 48 | | | 0 | 0 |
| | Less external load | | | | | | | | 0 | 0 | | | 0 | 0 |
| | Less transfer | | | | | | | | 0 | 0 | | | 0 | 0 |
| | Redistribution | | | | | | | | 0 | 0 | | | 0 | 0 |
| 14 | Subtotal | | | | | | | | 531 | 48 | | | 0 | 0 |
| 15 | Duct loads | | | | | | -0% | 0% | 0 | 0 | | | 0 | 0 |
| | Total room load | | | | | | | | 531 | 48 | | | 0 | 0 |
| | Air required (cfm) | | | | | | | | 17 | 2 | | | 0 | 0 |

Bold/italic values have been manually overridden





Right-J® Worksheet
Entire House
Rockview Designs

Job: 2349 Forest Lane
Date:
By: Rockview Designs (MM)

| 1 Room name | | Master Bathroom 24.3 ft | | | | | | Master Bedroom 31.3 ft | | | | | | |
|-------------------|--------------------------|----------------------------|-----------------------|-----|----------------|-------|------------------------------|---------------------------|-------------|------|------------------------------|-------|-------------|------|
| 2 Exposed wall | | 9.0 ft heat/cool | | | | | | 9.0 ft heat/cool | | | | | | |
| 3 Room height | | 1.0 x 125.1 ft | | | | | | 15.0 x 16.3 ft | | | | | | |
| 4 Room dimensions | | 125.1 ft² | | | | | | 245.0 ft² | | | | | | |
| 5 Room area | | | | | | | | | | | | | | |
| | Ty | Construction number | U-value (Btuh/ft²-°F) | Or | HTM (Btuh/ft²) | | Area (ft²) or perimeter (ft) | | Load (Btuh) | | Area (ft²) or perimeter (ft) | | Load (Btuh) | |
| | | | | | Heat | Cool | Gross | N/P/S | Heat | Cool | Gross | N/P/S | Heat | Cool |
| 6 | W | 15B-15sfc-4 | 0.059 | n | 3.83 | 0.16 | 0 | 0 | 0 | 0 | 0 | 0 | 0 | 0 |
| | W | R-20 Frame Wall | 0.062 | n | 4.65 | 0.44 | 0 | 0 | 0 | 0 | 0 | 0 | 0 | 0 |
| | G | Low E 2012 | 0.320 | n | 24.00 | 11.17 | 0 | 0 | 0 | 0 | 0 | 0 | 0 | 0 |
| | W | 15B-15sfc-4 | 0.059 | e | 3.83 | 0.16 | 0 | 0 | 0 | 0 | 0 | 0 | 0 | 0 |
| 11 | W | R-20 Frame Wall | 0.062 | e | 4.65 | 0.44 | 0 | 0 | 0 | 0 | 147 | 84 | 391 | 37 |
| | G | Low E 2012 | 0.320 | e | 24.00 | 34.99 | 0 | 0 | 0 | 0 | 63 | 0 | 1512 | 2205 |
| | D | DftDoor | 0.280 | e | 21.00 | 5.84 | 0 | 0 | 0 | 0 | 0 | 0 | 0 | 0 |
| | W | 15B-15sfc-4 | 0.059 | s | 3.83 | 0.16 | 0 | 0 | 0 | 0 | 0 | 0 | 0 | 0 |
| | W | R-20 Frame Wall | 0.062 | s | 4.65 | 0.44 | 117 | 110 | 509 | 48 | 135 | 129 | 600 | 56 |
| | G | Low E 2012 | 0.320 | s | 24.00 | 19.87 | 8 | 0 | 180 | 149 | 6 | 0 | 144 | 119 |
| | W | 15B-15sfc-4 | 0.059 | w | 3.83 | 0.16 | 0 | 0 | 0 | 0 | 0 | 0 | 0 | 0 |
| | W | R-20 Frame Wall | 0.062 | w | 4.65 | 0.44 | 102 | 102 | 474 | 45 | 0 | 0 | 0 | 0 |
| | G | Low E 2012 | 0.320 | w | 24.00 | 34.99 | 0 | 0 | 0 | 0 | 0 | 0 | 0 | 0 |
| | D | DftDoor | 0.280 | w | 21.00 | 5.84 | 0 | 0 | 0 | 0 | 0 | 0 | 0 | 0 |
| | C | R49 Attic | 0.022 | - | 1.65 | 0.98 | 0 | 0 | 0 | 0 | 0 | 0 | 0 | 0 |
| | F | 20P-30c | 0.035 | - | 2.63 | 0.15 | 0 | 0 | 0 | 0 | 0 | 0 | 0 | 0 |
| | F | 21A-32t | 0.020 | - | 1.50 | 0.00 | 0 | 0 | 0 | 0 | 0 | 0 | 0 | 0 |
| 6 | c) AED excursion | | | | | | | | | 0 | | | | 0 |
| | Envelope loss/gain | | | | | | | | 1163 | 241 | | | 2646 | 2417 |
| 12 | a) Infiltration | | | | | | | | 417 | 47 | | | 537 | 60 |
| | b) Room ventilation | | | | | | | | 0 | 0 | | | 0 | 0 |
| 13 | Internal gains: | | Occupants @ | 230 | | 0 | | | | 0 | 2 | | | 460 |
| | | | Appliances/other | | | | | | | 500 | | | | 0 |
| | Subtotal (lines 6 to 13) | | | | | | | | 1581 | 890 | | | 3184 | 3345 |
| | Less external load | | | | | | | | 0 | 0 | | | 0 | 0 |
| | Less transfer | | | | | | | | 0 | 0 | | | 0 | 0 |
| | Redistribution | | | | | | | | 0 | 0 | | | 0 | 0 |
| 14 | Subtotal | | | | | | | | 1581 | 890 | | | 3184 | 3345 |
| 15 | Duct loads | | | | | | | | -0% | 0% | | | 0 | 0 |
| | Total room load | | | | | | | | 1581 | 890 | | | 3184 | 3345 |
| | Air required (cfm) | | | | | | | | 51 | 46 | | | 102 | 173 |

Bold/italic values have been manually overridden



wrightsoft
A HUBBARD / WHITEHEAD WORKING COMPANY

Comfort Builder by Wrightsoft 19.0.15 RSU30090

...o Story Template\663 Dry Creek Trail - Copy.rup Calc = Manual Building Front faces: N



Right-J® Worksheet
Entire House
Rockview Designs

Job: 2349 Forest Lane
Date:
By: Rockview Designs (MM)

| 1 | Room name | | | | Kitchen | | | | Linen | | | | | |
|----|--------------------------|---------------------|------------------------------------|----|-----------------------------|-------|---|-------|----------------------|------|---|-------|-------------|------|
| 2 | Exposed wall | | | | 0 ft | | | | 3.0 ft | | | | | |
| 3 | Room height | | | | 9.0 ft | | | | 9.0 ft | | | | | |
| 4 | Room dimensions | | | | 1.0 x 436.3 ft | | | | 3.0 x 3.7 ft | | | | | |
| 5 | Room area | | | | 436.3 ft ² | | | | 11.0 ft ² | | | | | |
| | Ty | Construction number | U-value (Btuh/ft ² -°F) | Or | HTM (Btuh/ft ²) | | Area (ft ²) or perimeter (ft) | | Load (Btuh) | | Area (ft ²) or perimeter (ft) | | Load (Btuh) | |
| | | | | | Heat | Cool | Gross | N/P/S | Heat | Cool | Gross | N/P/S | Heat | Cool |
| 6 | W | 15B-15sfc-4 | 0.059 | n | 3.83 | 0.16 | 0 | 0 | 0 | 0 | 0 | 0 | 0 | 0 |
| | W | R-20 Frame Wall | 0.062 | n | 4.65 | 0.44 | 0 | 0 | 0 | 0 | 27 | 27 | 126 | 12 |
| | | Low E 2012 | 0.320 | n | 24.00 | 11.17 | 0 | 0 | 0 | 0 | 0 | 0 | 0 | 0 |
| | W | 15B-15sfc-4 | 0.059 | e | 3.83 | 0.16 | 0 | 0 | 0 | 0 | 0 | 0 | 0 | 0 |
| 11 | W | R-20 Frame Wall | 0.062 | e | 4.65 | 0.44 | 0 | 0 | 0 | 0 | 0 | 0 | 0 | 0 |
| | | Low E 2012 | 0.320 | e | 24.00 | 34.99 | 0 | 0 | 0 | 0 | 0 | 0 | 0 | 0 |
| | | DftDoor | 0.280 | e | 21.00 | 5.84 | 0 | 0 | 0 | 0 | 0 | 0 | 0 | 0 |
| | W | 15B-15sfc-4 | 0.059 | s | 3.83 | 0.16 | 0 | 0 | 0 | 0 | 0 | 0 | 0 | 0 |
| | W | R-20 Frame Wall | 0.062 | s | 4.65 | 0.44 | 0 | 0 | 0 | 0 | 0 | 0 | 0 | 0 |
| | | Low E 2012 | 0.320 | s | 24.00 | 19.87 | 0 | 0 | 0 | 0 | 0 | 0 | 0 | 0 |
| | W | 15B-15sfc-4 | 0.059 | w | 3.83 | 0.16 | 0 | 0 | 0 | 0 | 0 | 0 | 0 | 0 |
| | W | R-20 Frame Wall | 0.062 | w | 4.65 | 0.44 | 0 | 0 | 0 | 0 | 0 | 0 | 0 | 0 |
| | | Low E 2012 | 0.320 | w | 24.00 | 34.99 | 0 | 0 | 0 | 0 | 0 | 0 | 0 | 0 |
| | | DftDoor | 0.280 | w | 21.00 | 5.84 | 0 | 0 | 0 | 0 | 0 | 0 | 0 | 0 |
| | C | R49 Attic | 0.022 | - | 1.65 | 0.98 | 0 | 0 | 0 | 0 | 0 | 0 | 0 | 0 |
| | F | 20P-30c | 0.035 | - | 2.63 | 0.15 | 0 | 0 | 0 | 0 | 0 | 0 | 0 | 0 |
| | F | 21A-32t | 0.020 | - | 1.50 | 0.00 | 0 | 0 | 0 | 0 | 0 | 0 | 0 | 0 |
| 6 | c) AED excursion | | | | | | | | | 0 | | | | 0 |
| | Envelope loss/gain | | | | | | | | | 0 | 0 | | 126 | 12 |
| 12 | a) Infiltration | | | | | | | | 0 | 0 | | | 51 | 6 |
| | b) Room ventilation | | | | | | | | 0 | 0 | | | 0 | 0 |
| 13 | Internal gains: | | | | Occupants @ | 230 | 0 | | | 0 | 0 | | | 0 |
| | | | | | Appliances/other | | | | | 1000 | | | | 0 |
| | Subtotal (lines 6 to 13) | | | | | | | | | 0 | 911 | | 177 | 16 |
| | Less external load | | | | | | | | 0 | 0 | | | 0 | 0 |
| | Less transfer | | | | | | | | 0 | 0 | | | 0 | 0 |
| | Redistribution | | | | | | | | 11 | 1 | | | -177 | -16 |
| 14 | Subtotal | | | | | | | | 11 | 912 | | | 0 | 0 |
| 15 | Duct loads | | | | | | -0% | 0% | 0 | 0 | | -0% | 0% | 0 |
| | Total room load | | | | | | | | 11 | 912 | | | 0 | 0 |
| | Air required (cfm) | | | | | | | | 0 | 47 | | | 0 | 0 |

Bold/italic values have been manually overridden





Right-J® Worksheet
Entire House
Rockview Designs

Job: 2349 Forest Lane
Date:
By: Rockview Designs (MM)

| 1 | Room name | | | | Closet 17.3 ft | | | | Family Room 37.7 ft | | | | | |
|----|--------------------------|---------------------|-----------------------|----|-------------------|-------|------------------------------|-------|------------------------|------|------------------------------|-------|-------------|------|
| 2 | Exposed wall | | | | 9.0 ft heat/cool | | | | 9.0 ft heat/cool | | | | | |
| 3 | Room height | | | | 6.0 x 5.7 ft | | | | 1.0 x 565.4 ft | | | | | |
| 4 | Room dimensions | | | | 34.0 ft² | | | | 565.4 ft² | | | | | |
| 5 | Room area | | | | | | | | | | | | | |
| | Ty | Construction number | U-value (Btuh/ft²·°F) | Or | HTM (Btuh/ft²) | | Area (ft²) or perimeter (ft) | | Load (Btuh) | | Area (ft²) or perimeter (ft) | | Load (Btuh) | |
| | | | | | Heat | Cool | Gross | N/P/S | Heat | Cool | Gross | N/P/S | Heat | Cool |
| 6 | W | 15B-15sfc-4 | 0.059 | n | 3.83 | 0.16 | 0 | 0 | 0 | 0 | 0 | 0 | 0 | 0 |
| | W | R-20 Frame Wall | 0.062 | n | 4.65 | 0.44 | 54 | 54 | 251 | 24 | 198 | 182 | 846 | 80 |
| | | Low E 2012 | 0.320 | n | 24.00 | 11.17 | 0 | 0 | 0 | 0 | 16 | 0 | 384 | 179 |
| | W | 15B-15sfc-4 | 0.059 | e | 3.83 | 0.16 | 0 | 0 | 0 | 0 | 0 | 0 | 0 | 0 |
| 11 | W | R-20 Frame Wall | 0.062 | e | 4.65 | 0.44 | 51 | 51 | 237 | 22 | 66 | 66 | 307 | 29 |
| | | Low E 2012 | 0.320 | e | 24.00 | 34.99 | 0 | 0 | 0 | 0 | 0 | 0 | 0 | 0 |
| | | DftDoor | 0.280 | e | 21.00 | 5.84 | 0 | 0 | 0 | 0 | 0 | 0 | 0 | 0 |
| | W | 15B-15sfc-4 | 0.059 | s | 3.83 | 0.16 | 0 | 0 | 0 | 0 | 0 | 0 | 0 | 0 |
| | W | R-20 Frame Wall | 0.062 | s | 4.65 | 0.44 | 0 | 0 | 0 | 0 | 0 | 0 | 0 | 0 |
| | | Low E 2012 | 0.320 | s | 24.00 | 19.87 | 0 | 0 | 0 | 0 | 0 | 0 | 0 | 0 |
| | W | 15B-15sfc-4 | 0.059 | w | 3.83 | 0.16 | 0 | 0 | 0 | 0 | 0 | 0 | 0 | 0 |
| | W | R-20 Frame Wall | 0.062 | w | 4.65 | 0.44 | 51 | 51 | 237 | 22 | 75 | 75 | 349 | 33 |
| | | Low E 2012 | 0.320 | w | 24.00 | 34.99 | 0 | 0 | 0 | 0 | 0 | 0 | 0 | 0 |
| | | DftDoor | 0.280 | w | 21.00 | 5.84 | 0 | 0 | 0 | 0 | 0 | 0 | 0 | 0 |
| | C | R49 Attic | 0.022 | - | 1.65 | 0.98 | 34 | 34 | 56 | 33 | 565 | 565 | 933 | 552 |
| | F | 20P-30c | 0.035 | - | 2.63 | 0.15 | 0 | 0 | 0 | 0 | 0 | 0 | 0 | 0 |
| | F | 21A-32t | 0.020 | - | 1.50 | 0.00 | 0 | 0 | 0 | 0 | 0 | 0 | 0 | 0 |
| 6 | c) AED excursion | | | | | | | | | 0 | | | | 0 |
| | Envelope loss/gain | | | | | | | | 782 | 101 | | | 2819 | 872 |
| 12 | a) Infiltration | | | | | | | | 297 | 33 | | | 646 | 73 |
| | b) Room ventilation | | | | | | | | 0 | 0 | | | 0 | 0 |
| 13 | Internal gains: | | | | Occupants @ | 230 | 0 | | 0 | 0 | 0 | | 0 | 900 |
| | | | | | Appliances/other | | | | 0 | 0 | | | 0 | 0 |
| | Subtotal (lines 6 to 13) | | | | | | | | 1079 | 123 | | | 3465 | 1743 |
| | Less external load | | | | | | | | 0 | 0 | | | 0 | 0 |
| | Less transfer | | | | | | | | 0 | 0 | | | 0 | 0 |
| | Redistribution | | | | | | | | -1079 | -123 | | | 1079 | 123 |
| 14 | Subtotal | | | | | | | | 0 | 0 | | | 4543 | 1866 |
| 15 | Duct loads | | | | | | -0% | 0% | 0 | 0 | -0% | 0% | 0 | 0 |
| | Total room load | | | | | | | | 0 | 0 | | | 4543 | 1866 |
| | Air required (cfm) | | | | | | | | 0 | 0 | | | 145 | 96 |

Bold/italic values have been manually overridden



wrightsoft
 A HUBBARD / WHITEHEAD COMPANY

Comfort Builder by Wrightsoft 19.0.15 RSU30090

...o Story Template\663 Dry Creek Trail - Copy.rup Calc = Manual Building Front faces: N

2020-Apr-12 18:31:13

Page 7



Right-J® Worksheet
Entire House
Rockview Designs

Job: 2349 Forest Lane
Date:
By: Rockview Designs (MM)

| 1 | | Room name | | | | Bathroom 2 | | | | Bedroom 2 | | | | |
|----|--------------------------|---------------------|-----------------------|----|------------------|---------------|------------------------------|-------|-------------|----------------|------------------------------|-------|-------------|------|
| 2 | | Exposed wall | | | | 5.7 ft | | | | 14.3 ft | | | | |
| 3 | | Room height | | | | 9.0 ft | | | | 9.0 ft | | | | |
| 4 | | Room dimensions | | | | 12.0 x 5.7 ft | | | | 12.0 x 14.3 ft | | | | |
| 5 | | Room area | | | | 68.0 ft² | | | | 172.0 ft² | | | | |
| | Ty | Construction number | U-value (Btuh/ft²·°F) | Or | HTM (Btuh/ft²) | | Area (ft²) or perimeter (ft) | | Load (Btuh) | | Area (ft²) or perimeter (ft) | | Load (Btuh) | |
| | | | | | Heat | Cool | Gross | N/P/S | Heat | Cool | Gross | N/P/S | Heat | Cool |
| 6 | W | 15B-15sfc-4 | 0.059 | n | 3.83 | 0.16 | 0 | 0 | 0 | 0 | 0 | 0 | 0 | 0 |
| | W | R-20 Frame Wall | 0.062 | n | 4.65 | 0.44 | 0 | 0 | 0 | 0 | 0 | 0 | 0 | 0 |
| | G | Low E 2012 | 0.320 | n | 24.00 | 11.17 | 0 | 0 | 0 | 0 | 0 | 0 | 0 | 0 |
| | W | 15B-15sfc-4 | 0.059 | e | 3.83 | 0.16 | 0 | 0 | 0 | 0 | 0 | 0 | 0 | 0 |
| 11 | W | R-20 Frame Wall | 0.062 | e | 4.65 | 0.44 | 0 | 0 | 0 | 0 | 0 | 0 | 0 | 0 |
| | G | Low E 2012 | 0.320 | e | 24.00 | 34.99 | 0 | 0 | 0 | 0 | 0 | 0 | 0 | 0 |
| | D | DftDoor | 0.280 | e | 21.00 | 5.84 | 0 | 0 | 0 | 0 | 0 | 0 | 0 | 0 |
| | W | 15B-15sfc-4 | 0.059 | s | 3.83 | 0.16 | 0 | 0 | 0 | 0 | 0 | 0 | 0 | 0 |
| | W | R-20 Frame Wall | 0.062 | s | 4.65 | 0.44 | 0 | 0 | 0 | 0 | 0 | 0 | 0 | 0 |
| | G | Low E 2012 | 0.320 | s | 24.00 | 19.87 | 0 | 0 | 0 | 0 | 0 | 0 | 0 | 0 |
| | W | 15B-15sfc-4 | 0.059 | w | 3.83 | 0.16 | 0 | 0 | 0 | 0 | 0 | 0 | 0 | 0 |
| | W | R-20 Frame Wall | 0.062 | w | 4.65 | 0.44 | 51 | 51 | 237 | 22 | 129 | 113 | 525 | 49 |
| | G | Low E 2012 | 0.320 | w | 24.00 | 34.99 | 0 | 0 | 0 | 0 | 16 | 0 | 384 | 560 |
| | D | DftDoor | 0.280 | w | 21.00 | 5.84 | 0 | 0 | 0 | 0 | 0 | 0 | 0 | 0 |
| | C | R49 Attic | 0.022 | - | 1.65 | 0.98 | 68 | 68 | 112 | 66 | 172 | 172 | 284 | 168 |
| | F | 20P-30c | 0.035 | - | 2.63 | 0.15 | 0 | 0 | 0 | 0 | 0 | 0 | 0 | 0 |
| | F | 21A-32t | 0.020 | - | 1.50 | 0.00 | 0 | 0 | 0 | 0 | 0 | 0 | 0 | 0 |
| 6 | c) AED excursion | | | | | | | | | 0 | | | | 0 |
| | Envelope loss/gain | | | | | | | | | 349 | 89 | | 1193 | 777 |
| 12 | a) Infiltration | | | | | | | | | 97 | 11 | | 246 | 28 |
| | b) Room ventilation | | | | | | | | | 0 | 0 | | 0 | 0 |
| 13 | Internal gains: | | | | Occupants @ | 230 | 0 | | | 0 | 1 | | | 230 |
| | | | | | Appliances/other | | | | | 0 | | | | 0 |
| | Subtotal (lines 6 to 13) | | | | | | | | | 447 | 91 | | 1439 | 1022 |
| | Less external load | | | | | | | | | 0 | 0 | | 0 | 0 |
| | Less transfer | | | | | | | | | 0 | 0 | | 0 | 0 |
| | Redistribution | | | | | | | | | 0 | 0 | | 0 | 0 |
| 14 | Subtotal | | | | | | | | | 447 | 91 | | 1439 | 1022 |
| 15 | Duct loads | | | | | | -0% | 0% | | 0 | 0 | -0% | 0% | 0 |
| | Total room load | | | | | | | | | 447 | 91 | | 1439 | 1022 |
| | Air required (cfm) | | | | | | | | | 14 | 5 | | 46 | 53 |

Bold/italic values have been manually overridden



wrightsoft
 A HUBBARD / WHITLOCK COMPANY

Comfort Builder by Wrightsoft 19.0.15 RSU30090

...o Story Template\663 Dry Creek Trail - Copy.rup Calc = Manual Building Front faces: N

2020-Apr-12 18:31:13

Page 8



Right-J® Worksheet
Entire House
Rockview Designs

Job: 2349 Forest Lane
Date:
By: Rockview Designs (MM)

| 1 | | Room name | | | | Bathroom 3 | | | | Bedroom 3 | | | | |
|----|--------------------------|---------------------|-----------------------|----|------------------|------------------|------------------------------|-------|-------------|-------------------|------------------------------|-------|-------------|------|
| 2 | | Exposed wall | | | | 9.0 ft 5.7 ft | | | | 9.0 ft 27.7 ft | | | | |
| 3 | | Room height | | | | heat/cool | | | | heat/cool | | | | |
| 4 | | Room dimensions | | | | 12.0 x 5.7 ft | | | | 1.0 x 198.0 ft | | | | |
| 5 | | Room area | | | | 68.0 ft² | | | | 198.0 ft² | | | | |
| | Ty | Construction number | U-value (Btuh/ft²·°F) | Or | HTM (Btuh/ft²) | | Area (ft²) or perimeter (ft) | | Load (Btuh) | | Area (ft²) or perimeter (ft) | | Load (Btuh) | |
| | | | | | Heat | Cool | Gross | N/P/S | Heat | Cool | Gross | N/P/S | Heat | Cool |
| 6 | W | 15B-15sfc-4 | 0.059 | n | 3.83 | 0.16 | 0 | 0 | 0 | 0 | 0 | 0 | 0 | 0 |
| | W | R-20 Frame Wall | 0.062 | n | 4.65 | 0.44 | 0 | 0 | 0 | 0 | 0 | 0 | 0 | 0 |
| | G | Low E 2012 | 0.320 | n | 24.00 | 11.17 | 0 | 0 | 0 | 0 | 0 | 0 | 0 | 0 |
| | W | 15B-15sfc-4 | 0.059 | e | 3.83 | 0.16 | 0 | 0 | 0 | 0 | 0 | 0 | 0 | 0 |
| 11 | W | R-20 Frame Wall | 0.062 | e | 4.65 | 0.44 | 0 | 0 | 0 | 0 | 0 | 0 | 0 | 0 |
| | G | Low E 2012 | 0.320 | e | 24.00 | 34.99 | 0 | 0 | 0 | 0 | 0 | 0 | 0 | 0 |
| | D | DftDoor | 0.280 | e | 21.00 | 5.84 | 0 | 0 | 0 | 0 | 0 | 0 | 0 | 0 |
| | W | 15B-15sfc-4 | 0.059 | s | 3.83 | 0.16 | 0 | 0 | 0 | 0 | 0 | 0 | 0 | 0 |
| | W | R-20 Frame Wall | 0.062 | s | 4.65 | 0.44 | 0 | 0 | 0 | 0 | 138 | 138 | 642 | 60 |
| | G | Low E 2012 | 0.320 | s | 24.00 | 19.87 | 0 | 0 | 0 | 0 | 0 | 0 | 0 | 0 |
| | W | 15B-15sfc-4 | 0.059 | w | 3.83 | 0.16 | 0 | 0 | 0 | 0 | 0 | 0 | 0 | 0 |
| | W | R-20 Frame Wall | 0.062 | w | 4.65 | 0.44 | 51 | 51 | 237 | 22 | 111 | 95 | 442 | 42 |
| | G | Low E 2012 | 0.320 | w | 24.00 | 34.99 | 0 | 0 | 0 | 0 | 16 | 0 | 384 | 560 |
| | D | DftDoor | 0.280 | w | 21.00 | 5.84 | 0 | 0 | 0 | 0 | 0 | 0 | 0 | 0 |
| | C | R49 Attic | 0.022 | - | 1.65 | 0.98 | 68 | 68 | 112 | 66 | 198 | 198 | 327 | 193 |
| | F | 20P-30c | 0.035 | - | 2.63 | 0.15 | 0 | 0 | 0 | 0 | 0 | 0 | 0 | 0 |
| | F | 21A-32t | 0.020 | - | 1.50 | 0.00 | 0 | 0 | 0 | 0 | 0 | 0 | 0 | 0 |
| 6 | c) AED excursion | | | | | | | | | 0 | | | | 0 |
| | Envelope loss/gain | | | | | | | | | 349 | 89 | | 1794 | 855 |
| 12 | a) Infiltration | | | | | | | | | 97 | 11 | | 474 | 53 |
| | b) Room ventilation | | | | | | | | | 0 | 0 | | 0 | 0 |
| 13 | Internal gains: | | | | Occupants @ | 230 | 0 | | | 0 | 1 | | 230 | 0 |
| | | | | | Appliances/other | | | | | 0 | | | 0 | |
| | Subtotal (lines 6 to 13) | | | | | | | | | 447 | 91 | | 2269 | 1326 |
| | Less external load | | | | | | | | | 0 | 0 | | 0 | 0 |
| | Less transfer | | | | | | | | | 0 | 0 | | 0 | 0 |
| | Redistribution | | | | | | | | | 0 | 0 | | 0 | 0 |
| 14 | Subtotal | | | | | | | | | 447 | 91 | | 2269 | 1326 |
| 15 | Duct loads | | | | | | -0% | 0% | | 0 | 0 | | 0 | 0 |
| | Total room load | | | | | | | | | 447 | 91 | | 2269 | 1326 |
| | Air required (cfm) | | | | | | | | | 14 | 5 | | 73 | 69 |

Bold/italic values have been manually overridden





Right-J® Worksheet
Entire House
Rockview Designs

Job: 2349 Forest Lane
Date:
By: Rockview Designs (MM)

| 1 | Room name | | | | Bedroom 4 | | | | Crawlspace | | | | | |
|----|--------------------------|---------------------|------------------------------------|----|-----------------------------|-------|---|-------|------------------------|------|---|-------|-------------|------|
| 2 | Exposed wall | | | | 27.7 ft | | | | 212.0 ft | | | | | |
| 3 | Room height | | | | 9.0 ft | | | | 9.0 ft | | | | | |
| 4 | Room dimensions | | | | 12.7 x 15.0 ft | | | | 1.0 x 1961.3 ft | | | | | |
| 5 | Room area | | | | 190.0 ft ² | | | | 1961.3 ft ² | | | | | |
| | Ty | Construction number | U-value (Btuh/ft ² -°F) | Or | HTM (Btuh/ft ²) | | Area (ft ²) or perimeter (ft) | | Load (Btuh) | | Area (ft ²) or perimeter (ft) | | Load (Btuh) | |
| | | | | | Heat | Cool | Gross | N/P/S | Heat | Cool | Gross | N/P/S | Heat | Cool |
| 6 | W | 15B-15sfc-4 | 0.059 | n | 3.83 | 0.16 | 0 | 0 | 0 | 0 | 441 | 441 | 1687 | 72 |
| | W | R-20 Frame Wall | 0.062 | n | 4.65 | 0.44 | 0 | 0 | 0 | 0 | 0 | 0 | 0 | 0 |
| | G | Low E 2012 | 0.320 | n | 24.00 | 11.17 | 0 | 0 | 0 | 0 | 0 | 0 | 0 | 0 |
| | W | 15B-15sfc-4 | 0.059 | e | 3.83 | 0.16 | 0 | 0 | 0 | 0 | 513 | 513 | 1962 | 83 |
| 11 | W | R-20 Frame Wall | 0.062 | e | 4.65 | 0.44 | 135 | 135 | 628 | 59 | 0 | 0 | 0 | 0 |
| | G | Low E 2012 | 0.320 | e | 24.00 | 34.99 | 0 | 0 | 0 | 0 | 0 | 0 | 0 | 0 |
| | D | DftDoor | 0.280 | e | 21.00 | 5.84 | 0 | 0 | 0 | 0 | 0 | 0 | 0 | 0 |
| | W | 15B-15sfc-4 | 0.059 | s | 3.83 | 0.16 | 0 | 0 | 0 | 0 | 441 | 441 | 1687 | 72 |
| | W | R-20 Frame Wall | 0.062 | s | 4.65 | 0.44 | 114 | 98 | 456 | 43 | 0 | 0 | 0 | 0 |
| | G | Low E 2012 | 0.320 | s | 24.00 | 19.87 | 16 | 0 | 384 | 318 | 0 | 0 | 0 | 0 |
| | W | 15B-15sfc-4 | 0.059 | w | 3.83 | 0.16 | 0 | 0 | 0 | 0 | 513 | 513 | 1962 | 83 |
| | W | R-20 Frame Wall | 0.062 | w | 4.65 | 0.44 | 0 | 0 | 0 | 0 | 0 | 0 | 0 | 0 |
| | G | Low E 2012 | 0.320 | w | 24.00 | 34.99 | 0 | 0 | 0 | 0 | 0 | 0 | 0 | 0 |
| | D | DftDoor | 0.280 | w | 21.00 | 5.84 | 0 | 0 | 0 | 0 | 0 | 0 | 0 | 0 |
| | C | R49 Attic | 0.022 | - | 1.65 | 0.98 | 190 | 190 | 313 | 185 | 14 | 14 | 23 | 14 |
| | F | 20P-30c | 0.035 | - | 2.63 | 0.15 | 0 | 0 | 0 | 0 | 0 | 0 | 0 | 0 |
| | F | 21A-32t | 0.020 | - | 1.50 | 0.00 | 0 | 0 | 0 | 0 | 1961 | 1961 | 2942 | 0 |
| 6 | c) AED excursion | | | | | | | | | 0 | | | | 0 |
| | Envelope loss/gain | | | | | | | | 1781 | 605 | | | 10263 | 323 |
| 12 | a) Infiltration | | | | | | | | 474 | 53 | | | 2019 | 227 |
| | b) Room ventilation | | | | | | | | 0 | 0 | | | 0 | 0 |
| 13 | Internal gains: | | | | Occupants @ | 230 | 1 | | | 230 | 0 | | | 0 |
| | | | | | Appliances/other | | | | | 0 | | | | 0 |
| | Subtotal (lines 6 to 13) | | | | | | | | 2255 | 1175 | | | 5000 | 507 |
| | Less external load | | | | | | | | 0 | 0 | | | 0 | 0 |
| | Less transfer | | | | | | | | 0 | 0 | | | 0 | 0 |
| | Redistribution | | | | | | | | 0 | 0 | | | 0 | 0 |
| 14 | Subtotal | | | | | | | | 2255 | 1175 | | | 5000 | 507 |
| 15 | Duct loads | | | | | | -0% | 0% | 0 | 0 | -0% | 0% | 0 | 0 |
| | Total room load | | | | | | | | 2255 | 1175 | | | 5000 | 507 |
| | Air required (cfm) | | | | | | | | 72 | 61 | | | 160 | 26 |

Bold/italic values have been manually overridden



wrightsoft
 A HOK® / Autodesk® Building Technology Company

Comfort Builder by Wrightsoft 19.0.15 RSU30090

...o Story Template\663 Dry Creek Trail - Copy.rup Calc = Manual Building Front faces: N



Project Information

For: Elevation Builders
2419 Forest Lane, Driggs, ID 83452

Design Conditions

| | | | |
|--|--|---|--|
| Location: Driggs, Idaho Elevation: 6103 ft Latitude: 45°N | | Indoor: Indoor temperature (°F) 72 Design TD (°F) 75 Relative humidity (%) 30 Moisture difference (gr/lb) 39.1 | Heating 72 Cooling 75 16 50 -33.9 |
| Outdoor: Drybulb (°F) Daily range (°F) Wet bulb (°F) Wind speed (mph) | Heating -3 - - 15.0 | Cooling 91 33 (H) 60 7.5 | Infiltration: Method Construction quality Fireplaces |
| | | | Simplified Semi-tight 0 |

Construction descriptions

| | Or | Area ft ² | U-value Btuh/ft ² -°F | Insul R ft ² -°F/Btuh | Htg HTM Btuh/ft ² | Loss Btuh | Clg HTM Btuh/ft ² | Gain Btuh |
|--|-----|-------------------------|-------------------------------------|-------------------------------------|---------------------------------|--------------|---------------------------------|--------------|
| Walls 15B-15sfc-4: Bg wall, heavy dry or light damp soil, concrete wall, r-15 ins, 8" thk | n | 441 | 0.041 | 15.0 | 3.83 | 1687 | 0.16 | 72 |
| | e | 513 | 0.041 | 15.0 | 3.83 | 1962 | 0.16 | 83 |
| | s | 441 | 0.041 | 15.0 | 3.83 | 1687 | 0.16 | 72 |
| | w | 513 | 0.041 | 15.0 | 3.83 | 1962 | 0.16 | 83 |
| | all | 1908 | 0.041 | 15.0 | 3.83 | 7298 | 0.16 | 310 |
| R-20 Frame Wall: Frm wall, wd ext, 3/8" wood shth, r-20 cav ins, 1/2" gypsum board int fnsh, 2"x6" wood frm, 16" o.c. stud | n | 782 | 0.062 | 20.0 | 4.65 | 3636 | 0.44 | 342 |
| | e | 690 | 0.062 | 20.0 | 4.65 | 3209 | 0.44 | 302 |
| | s | 653 | 0.062 | 20.0 | 4.65 | 3034 | 0.44 | 285 |
| | w | 946 | 0.062 | 20.0 | 4.65 | 4399 | 0.44 | 413 |
| | all | 3071 | 0.062 | 20.0 | 4.65 | 14278 | 0.44 | 1342 |

Partitions (none)

Windows

| | | | | | | | | |
|---|-----|-----|-------|---|------|------|------|-------|
| Low E 2012: 2 glazing, clr outr, air gas, mtl no brk frm mat, clr innr, 1/4" gap, 1/8" thk; 6.67 ft head ht | n | 16 | 0.320 | 0 | 24.0 | 384 | 11.2 | 179 |
| | e | 192 | 0.320 | 0 | 24.0 | 4608 | 35.0 | 6719 |
| | s | 146 | 0.320 | 0 | 24.0 | 3492 | 19.9 | 2891 |
| | w | 32 | 0.320 | 0 | 24.0 | 768 | 35.0 | 1120 |
| | all | 386 | 0.320 | 0 | 24.0 | 9252 | 28.3 | 10908 |

Doors

| | | | | | | | | |
|---------------------------|-----|----|-------|---|------|-----|------|-----|
| DftDoor: Door, wd sc type | e | 21 | 0.280 | 0 | 21.0 | 441 | 5.84 | 123 |
| | w | 21 | 0.280 | 0 | 21.0 | 441 | 5.84 | 123 |
| | all | 42 | 0.280 | 0 | 21.0 | 882 | 5.84 | 245 |

Ceilings

| | | | | | | | |
|--|------|-------|------|------|------|------|------|
| R49 Attic: Attic ceiling, asphalt shingles roof mat, r-49 ceil ins, 1/2" gypsum board int fnsh | 1975 | 0.022 | 49.0 | 1.65 | 3259 | 0.98 | 1927 |
|--|------|-------|------|------|------|------|------|

Floors

| | | | | | | | |
|--|------|-------|------|------|------|------|---|
| 20P-30c: Flr floor, frm flr, 12" thkns, carpet flr fnsh, r-30 cav ins, amb | 14 | 0.035 | 30.0 | 2.63 | 37 | 0.15 | 2 |
| ovr | | | | | | | |
| 21A-32t: Bg floor, heavy dry or light damp soil, 4' depth | 1961 | 0.020 | 0 | 1.50 | 2942 | 0 | 0 |

Bold/italic values have been manually overridden

Bold/italic values have been manually overridden



Project Information

For: Elevation Builders
2419 Forest Lane, Driggs, ID 83452

Design Conditions

| | | | | | |
|--------------------|----------------|----------------|-----------------------------|----------------|----------------|
| Location: | | | Indoor: | Heating | Cooling |
| Driggs, Idaho | | | Indoor temperature (°F) | 72 | 75 |
| Elevation: 6103 ft | | | Design TD (°F) | 75 | 16 |
| Latitude: 45°N | | | Relative humidity (%) | 30 | 50 |
| Outdoor: | Heating | Cooling | Moisture difference (gr/lb) | 39.1 | -33.9 |
| Drybulb (°F) | -3 | 91 | Infiltration: | | |
| Daily range (°F) | - | 33 (H) | Method | Simplified | |
| Wet bulb (°F) | - | 60 | Construction quality | Semi-tight | |
| Wind speed (mph) | 15.0 | 7.5 | Fireplaces | 0 | |

Construction descriptions

Walls

R-20 Frame Wall: Frm wall, wd ext, 3/8" wood shth, r-20 cav ins, 1/2" gypsum board int fnsh, 2"x6" wood frm, 16" o.c. stud

| | Or | Area ft² | U-value Btuh/ft²-°F | Insul R ft²-°F/Btuh | Htg HTM Btuh/ft² | Loss Btuh | Clg HTM Btuh/ft² | Gain Btuh |
|-----|----|-------------|------------------------|------------------------|---------------------|--------------|---------------------|--------------|
| n | | 126 | 0.062 | 20.0 | 4.65 | 586 | 0.44 | 55 |
| e | | 60 | 0.062 | 20.0 | 4.65 | 279 | 0.44 | 26 |
| w | | 96 | 0.062 | 20.0 | 4.65 | 446 | 0.44 | 42 |
| all | | 282 | 0.062 | 20.0 | 4.65 | 1311 | 0.44 | 123 |

Partitions

(none)

Windows

Low E 2012: 2 glazing, clr outr, air gas, mtl no brk frm mat, clr innr, 1/4" gap, 1/8" thk; 6.67 ft head ht

| | | | | | | | | |
|---|--|----|-------|---|------|-----|------|------|
| e | | 36 | 0.320 | 0 | 24.0 | 864 | 35.0 | 1260 |
|---|--|----|-------|---|------|-----|------|------|

Doors

(none)

Ceilings

R49 Attic: Attic ceiling, asphalt shingles roof mat, r-49 ceil ins, 1/2" gypsum board int fnsh

| | | | | | | | | |
|--|--|-----|-------|------|------|-----|------|-----|
| | | 149 | 0.022 | 49.0 | 1.65 | 246 | 0.98 | 146 |
|--|--|-----|-------|------|------|-----|------|-----|

Floors

(none)

Bold/italic values have been manually overridden



Project Information

For: Elevation Builders
2419 Forest Lane, Driggs, ID 83452

Design Conditions

| | | | | | |
|------------------|----------------|-----------------------------|----------------------|----------------|----------------|
| Location: | | Indoor: | | Heating | Cooling |
| Driggs, Idaho | | Indoor temperature (°F) | | 72 | 75 |
| Elevation: | 6103 ft | Design TD (°F) | | 75 | 16 |
| Latitude: | 45°N | Relative humidity (%) | | 30 | 50 |
| Outdoor: | | Moisture difference (gr/lb) | | 39.1 | -33.9 |
| | Heating | Cooling | Infiltration: | | |
| Dry bulb (°F) | -3 | 91 | Method | | |
| Daily range (°F) | - | 33 (H) | Construction quality | | |
| Wet bulb (°F) | - | 60 | Fireplaces | | |
| Wind speed (mph) | 15.0 | 7.5 | Simplified | | |
| | | | Semi-tight | | |
| | | | 0 | | |

Construction descriptions

| | Or | Area | U-value | Insul R | Htg HTM | Loss | Clg HTM | Gain |
|--|-----|------|-------------|-------------|----------|------|----------|------|
| | | ft² | Btuh/ft²-°F | ft²-°F/Btuh | Btuh/ft² | Btuh | Btuh/ft² | Btuh |
| Walls | | | | | | | | |
| R-20 Frame Wall: Frm wall, wd ext, 3/8" wood shth, r-20 cav ins, 1/2" gypsum board int fnsh, 2"x6" wood frm, 16" o.c. stud | n | 90 | 0.062 | 20.0 | 4.65 | 419 | 0.44 | 39 |
| | w | 33 | 0.062 | 20.0 | 4.65 | 153 | 0.44 | 14 |
| | all | 123 | 0.062 | 20.0 | 4.65 | 572 | 0.44 | 54 |

Partitions
(none)

Windows
(none)

Doors
(none)

Ceilings
(none)

Floors
(none)

Bold/italic values have been manually overridden



Project Information

For: Elevation Builders
 2419 Forest Lane, Driggs, ID 83452

Design Conditions

| | | | | | |
|--|--|---|---|--|---|
| Location: Driggs, Idaho Elevation: 6103 ft Latitude: 45°N | | | Indoor: Indoor temperature (°F) Design TD (°F) Relative humidity (%) Moisture difference (gr/lb) | Heating 72 75 30 39.1 | Cooling 75 16 50 -33.9 |
| Outdoor: Drybulb (°F) Daily range (°F) Wet bulb (°F) Wind speed (mph) | Heating -3 - - 15.0 | Cooling 91 33 (H) 60 7.5 | Infiltration: Method Construction quality Fireplaces | Simplified Semi-tight 0 | |

Construction descriptions

| | Or | Area ft² | U-value Btuh/ft²-°F | Insul R ft²-°F/Btuh | Htg HTM Btuh/ft² | Loss Btuh | Clg HTM Btuh/ft² | Gain Btuh |
|--|-----|-------------|------------------------|------------------------|---------------------|--------------|---------------------|--------------|
| Walls R-20 Frame Wall: Frm wall, wd ext, 3/8" wood shth, r-20 cav ins, 1/2" gypsum board int fnsh, 2"x6" wood frm, 16" o.c. stud | n | 36 | 0.062 | 20.0 | 4.65 | 167 | 0.44 | 16 |
| | e | 33 | 0.062 | 20.0 | 4.65 | 153 | 0.44 | 14 |
| | w | 48 | 0.062 | 20.0 | 4.65 | 223 | 0.44 | 21 |
| | all | 117 | 0.062 | 20.0 | 4.65 | 544 | 0.44 | 51 |
| Partitions (none) | | | | | | | | |
| Windows (none) | | | | | | | | |
| Doors DftDoor: Door, wd sc type | e | 21 | 0.280 | 0 | 21.0 | 441 | 5.84 | 123 |
| Ceilings R49 Attic: Attic ceiling, asphalt shingles roof mat, r-49 ceil ins, 1/2" gypsum board int fnsh | | 2 | 0.022 | 49.0 | 1.65 | 3 | 0.98 | 2 |
| Floors (none) | | | | | | | | |

Bold/italic values have been manually overridden



Project Information

For: Elevation Builders
 2419 Forest Lane, Driggs, ID 83452

Design Conditions

| | | | | |
|---|--|---|--|---|
| Location: Driggs, Idaho Elevation: 6103 ft Latitude: 45°N | | Indoor: Indoor temperature (°F) 72 Design TD (°F) 75 Relative humidity (%) 30 Moisture difference (gr/lb) 39.1 | Heating 72 75 30 39.1 | Cooling 75 16 50 -33.9 |
| Outdoor: Dry bulb (°F) Daily range (°F) Wet bulb (°F) Wind speed (mph) | Heating -3 - - 15.0 | Cooling 91 33 (H) 60 7.5 | Infiltration: Method Simplified Construction quality Semi-tight Fireplaces 0 | |

Construction descriptions

| | Or | Area | U-value | Insul R | Htg HTM | Loss | Clg HTM | Gain |
|--|-----|-----------------|--------------------------|--------------------------|----------------------|------|----------------------|------|
| | | ft ² | Btuh/ft ² -°F | ft ² -°F/Btuh | Btuh/ft ² | Btuh | Btuh/ft ² | Btuh |
| Walls | | | | | | | | |
| R-20 Frame Wall: Frm wall, wd ext, 3/8" wood shth, r-20 cav ins, 1/2" gypsum board int fnsh, 2"x6" wood frm, 16" o.c. stud | n | 267 | 0.062 | 20.0 | 4.65 | 1242 | 0.44 | 117 |
| | e | 261 | 0.062 | 20.0 | 4.65 | 1214 | 0.44 | 114 |
| | s | 178 | 0.062 | 20.0 | 4.65 | 828 | 0.44 | 78 |
| | w | 18 | 0.062 | 20.0 | 4.65 | 84 | 0.44 | 8 |
| | all | 724 | 0.062 | 20.0 | 4.65 | 3367 | 0.44 | 316 |
| Partitions (none) | | | | | | | | |
| Windows | | | | | | | | |
| Low E 2012: 2 glazing, clr outr, air gas, mtl no brk frm mat, clr innr, 1/4" gap, 1/8" thk; 6.67 ft head ht | e | 93 | 0.320 | 0 | 24.0 | 2232 | 35.0 | 3254 |
| | s | 116 | 0.320 | 0 | 24.0 | 2784 | 19.9 | 2305 |
| | all | 209 | 0.320 | 0 | 24.0 | 5016 | 26.6 | 5559 |
| Doors (none) | | | | | | | | |
| Ceilings | | | | | | | | |
| R49 Attic: Attic ceiling, asphalt shingles roof mat, r-49 ceil ins, 1/2" gypsum board int fnsh | | 515 | 0.022 | 49.0 | 1.65 | 849 | 0.98 | 502 |
| Floors | | | | | | | | |
| 20P-30c: Flr floor, frm flr, 12" thkns, carpet flr fnsh, r-30 cav ins, amb ovr | | 14 | 0.035 | 30.0 | 2.63 | 37 | 0.15 | 2 |

Bold/italic values have been manually overridden



Project Information

For: Elevation Builders
 2419 Forest Lane, Driggs, ID 83452

Design Conditions

| | | | | | | |
|------------------|---------|----------------|----------------|-----------------------------|----------------|----------------|
| Location: | | | | Indoor: | Heating | Cooling |
| Driggs, Idaho | | | | Indoor temperature (°F) | 72 | 75 |
| Elevation: | 6103 ft | | | Design TD (°F) | 75 | 16 |
| Latitude: | 45°N | | | Relative humidity (%) | 30 | 50 |
| Outdoor: | | Heating | Cooling | Moisture difference (gr/lb) | 39.1 | -33.9 |
| Drybulb (°F) | | -3 | 91 | Infiltration: | | |
| Daily range (°F) | | - | 33 (H) | Method | Simplified | |
| Wet bulb (°F) | | - | 60 | Construction quality | Semi-tight | |
| Wind speed (mph) | | 15.0 | 7.5 | Fireplaces | 0 | |

Construction descriptions

| | Or | Area ft² | U-value Btuh/ft²-°F | Insul R ft²-°F/Btuh | Htg HTM Btuh/ft² | Loss Btuh | Clg HTM Btuh/ft² | Gain Btuh |
|--|----|-------------|------------------------|------------------------|---------------------|--------------|---------------------|--------------|
| Walls R-20 Frame Wall: Frm wall, wd ext, 3/8" wood shth, r-20 cav ins, 1/2" gypsum board int fnsh, 2"x6" wood frm, 16" o.c. stud | w | 132 | 0.062 | 20.0 | 4.65 | 614 | 0.44 | 58 |
| Partitions (none) | | | | | | | | |
| Windows (none) | | | | | | | | |
| Doors DftDoor: Door, wd sc type | w | 21 | 0.280 | 0 | 21.0 | 441 | 5.84 | 123 |
| Ceilings (none) | | | | | | | | |
| Floors (none) | | | | | | | | |

Bold/italic values have been manually overridden



Project Information

For: Elevation Builders
 2419 Forest Lane, Driggs, ID 83452

Design Conditions

| | | | | | |
|--------------------|----------------|-----------------------------|----------------------|----------------|----------------|
| Location: | | Indoor: | | Heating | Cooling |
| Driggs, Idaho | | Indoor temperature (°F) | | 72 | 75 |
| Elevation: 6103 ft | | Design TD (°F) | | 75 | 16 |
| Latitude: 45°N | | Relative humidity (%) | | 30 | 50 |
| | | Moisture difference (gr/lb) | | 39.1 | -33.9 |
| Outdoor: | Heating | Cooling | Infiltration: | | |
| Drybulb (°F) | -3 | 91 | Method | | |
| Daily range (°F) | - | 33 (H) | Construction quality | | |
| Wet bulb (°F) | - | 60 | Fireplaces | | |
| Wind speed (mph) | 15.0 | 7.5 | Simplified | | |
| | | | Semi-tight | | |
| | | | 0 | | |

Construction descriptions

| | Or | Area | U-value | Insul R | Htg HTM | Loss | Clg HTM | Gain |
|--|----|------|-------------|-------------|----------|------|----------|------|
| | | ft² | Btuh/ft²-°F | ft²-°F/Btuh | Btuh/ft² | Btuh | Btuh/ft² | Btuh |
| Walls R-20 Frame Wall: Frm wall, wd ext, 3/8" wood shth, r-20 cav ins, 1/2" gypsum board int fnsh, 2"x6" wood frm, 16" o.c. stud | w | 81 | 0.062 | 20.0 | 4.65 | 377 | 0.44 | 35 |

Partitions
(none)

Windows
(none)

Doors
(none)

Ceilings
(none)

Floors
(none)

Bold/italic values have been manually overridden



Component Constructions

Toilet

Rockview Designs

Job: 2349 Forest Lane
Date:
By: Rockview Designs (MM)

Project Information

For: Elevation Builders
2419 Forest Lane, Driggs, ID 83452

Design Conditions

| | | | | | | |
|------------------|---------|----------------|----------------|-----------------------------|----------------|----------------|
| Location: | | | | Indoor: | Heating | Cooling |
| Driggs, Idaho | | | | Indoor temperature (°F) | 72 | 75 |
| Elevation: | 6103 ft | | | Design TD (°F) | 75 | 16 |
| Latitude: | 45°N | | | Relative humidity (%) | 30 | 50 |
| Outdoor: | | Heating | Cooling | Moisture difference (gr/lb) | 39.1 | -33.9 |
| Drybulb (°F) | | -3 | 91 | Infiltration: | | |
| Daily range (°F) | | - | 33 (H) | Method | Simplified | |
| Wet bulb (°F) | | - | 60 | Construction quality | Semi-tight | |
| Wind speed (mph) | | 15.0 | 7.5 | Fireplaces | 0 | |

Construction descriptions

| Or | Area | U-value | Insul R | Htg HTM | Loss | Clg HTM | Gain |
|----|------|-------------|-------------|----------|------|----------|------|
| | ft² | Btuh/ft²-°F | ft²-°F/Btuh | Btuh/ft² | Btuh | Btuh/ft² | Btuh |

Walls
(none)

Partitions
(none)

Windows
(none)

Doors
(none)

Ceilings
(none)

Floors
(none)

Bold/italic values have been manually overridden



Comfort Builder by Wrightsoft 19.0.15 RSU30090

2020-Apr-12 18:31:14

Page 9



Project Information

For: Elevation Builders
 2419 Forest Lane, Driggs, ID 83452

Design Conditions

| | | | | |
|---|--|---|--|---|
| Location: Driggs, Idaho Elevation: 6103 ft Latitude: 45°N | | Indoor: Indoor temperature (°F) 72 Design TD (°F) 75 Relative humidity (%) 30 Moisture difference (gr/lb) 39.1 | Heating 72 75 30 39.1 | Cooling 75 16 50 -33.9 |
| Outdoor: Dry bulb (°F) Daily range (°F) Wet bulb (°F) Wind speed (mph) | Heating -3 - - 15.0 | Cooling 91 33 (H) 60 7.5 | Infiltration: Method Simplified Construction quality Semi-tight Fireplaces 0 | |

Construction descriptions

Walls

R-20 Frame Wall: Frm wall, wd ext, 3/8" wood shth, r-20 cav ins, 1/2" gypsum board int fnsh, 2"x6" wood frm, 16" o.c. stud

| Or | Area ft² | U-value Btuh/ft²-°F | Insul R ft²-°F/Btuh | Htg HTM Btuh/ft² | Loss Btuh | Clg HTM Btuh/ft² | Gain Btuh |
|-----|-------------|------------------------|------------------------|---------------------|--------------|---------------------|--------------|
| s | 110 | 0.062 | 20.0 | 4.65 | 509 | 0.44 | 48 |
| w | 102 | 0.062 | 20.0 | 4.65 | 474 | 0.44 | 45 |
| all | 212 | 0.062 | 20.0 | 4.65 | 983 | 0.44 | 92 |

Partitions

(none)

Windows

Low E 2012: 2 glazing, clr outr, air gas, mtl no brk frm mat, clr innr, 1/4" gap, 1/8" thk; 6.67 ft head ht

| | | | | | | | |
|---|---|-------|---|------|-----|------|-----|
| s | 8 | 0.320 | 0 | 24.0 | 180 | 19.9 | 149 |
|---|---|-------|---|------|-----|------|-----|

Doors

(none)

Ceilings

(none)

Floors

(none)

Bold/italic values have been manually overridden



Project Information

For: Elevation Builders
 2419 Forest Lane, Driggs, ID 83452

Design Conditions

| | | | | | |
|---|--|---|---|--|---|
| Location: Driggs, Idaho Elevation: 6103 ft Latitude: 45°N | | | Indoor: Indoor temperature (°F) Design TD (°F) Relative humidity (%) Moisture difference (gr/lb) | Heating 72 75 30 39.1 | Cooling 75 16 50 -33.9 |
| Outdoor: Dry bulb (°F) Daily range (°F) Wet bulb (°F) Wind speed (mph) | Heating -3 - - 15.0 | Cooling 91 33 (H) 60 7.5 | Infiltration: Method Construction quality Fireplaces | Simplified Semi-tight 0 | |

Construction descriptions

Walls

R-20 Frame Wall: Frm wall, wd ext, 3/8" wood shth, r-20 cav ins, 1/2" gypsum board int fnsh, 2"x6" wood frm, 16" o.c. stud

| Or | Area ft² | U-value Btuh/ft²-°F | Insul R ft²-°F/Btuh | Htg HTM Btuh/ft² | Loss Btuh | Clg HTM Btuh/ft² | Gain Btuh |
|-----|-------------|------------------------|------------------------|---------------------|--------------|---------------------|--------------|
| e | 84 | 0.062 | 20.0 | 4.65 | 391 | 0.44 | 37 |
| s | 129 | 0.062 | 20.0 | 4.65 | 600 | 0.44 | 56 |
| all | 213 | 0.062 | 20.0 | 4.65 | 990 | 0.44 | 93 |

Partitions

(none)

Windows

Low E 2012: 2 glazing, clr outr, air gas, mtl no brk frm mat, clr innr, 1/4" gap, 1/8" thk; 6.67 ft head ht

| | | | | | | | |
|-----|----|-------|---|------|------|------|------|
| e | 63 | 0.320 | 0 | 24.0 | 1512 | 35.0 | 2205 |
| s | 6 | 0.320 | 0 | 24.0 | 144 | 19.9 | 119 |
| all | 69 | 0.320 | 0 | 24.0 | 1656 | 33.7 | 2324 |

Doors

(none)

Ceilings

(none)

Floors

(none)

Bold/italic values have been manually overridden



Project Information

For: Elevation Builders
 2419 Forest Lane, Driggs, ID 83452

Design Conditions

| | | | | | | |
|------------------|---------|----------------|----------------|-----------------------------|----------------|----------------|
| Location: | | | | Indoor: | Heating | Cooling |
| Driggs, Idaho | | | | Indoor temperature (°F) | 72 | 75 |
| Elevation: | 6103 ft | | | Design TD (°F) | 75 | 16 |
| Latitude: | 45°N | | | Relative humidity (%) | 30 | 50 |
| Outdoor: | | Heating | Cooling | Moisture difference (gr/lb) | 39.1 | -33.9 |
| Drybulb (°F) | | -3 | 91 | Infiltration: | | |
| Daily range (°F) | | - | 33 (H) | Method | Simplified | |
| Wet bulb (°F) | | - | 60 | Construction quality | Semi-tight | |
| Wind speed (mph) | | 15.0 | 7.5 | Fireplaces | 0 | |

Construction descriptions

| | | | | | | | |
|-----------|-----------------|--------------------------|--------------------------|----------------------|-------------|----------------------|-------------|
| Or | Area | U-value | Insul R | Htg HTM | Loss | Clg HTM | Gain |
| | ft ² | Btuh/ft ² -°F | ft ² -°F/Btuh | Btuh/ft ² | Btuh | Btuh/ft ² | Btuh |

Walls
(none)

Partitions
(none)

Windows
(none)

Doors
(none)

Ceilings
(none)

Floors
(none)

Bold/italic values have been manually overridden



Project Information

For: Elevation Builders
 2419 Forest Lane, Driggs, ID 83452

Design Conditions

| | | | | | |
|--------------------|----------------|-----------------------------|----------------------|----------------|----------------|
| Location: | | Indoor: | | Heating | Cooling |
| Driggs, Idaho | | Indoor temperature (°F) | | 72 | 75 |
| Elevation: 6103 ft | | Design TD (°F) | | 75 | 16 |
| Latitude: 45°N | | Relative humidity (%) | | 30 | 50 |
| | | Moisture difference (gr/lb) | | 39.1 | -33.9 |
| Outdoor: | Heating | Cooling | Infiltration: | | |
| Dry bulb (°F) | -3 | 91 | Method | | |
| Daily range (°F) | - | 33 (H) | Construction quality | | |
| Wet bulb (°F) | - | 60 | Fireplaces | | |
| Wind speed (mph) | 15.0 | 7.5 | Simplified | | |
| | | | Semi-tight | | |
| | | | 0 | | |

Construction descriptions

| | Or | Area | U-value | Insul R | Htg HTM | Loss | Clg HTM | Gain |
|--|----|------|-------------|-------------|----------|------|----------|------|
| | | ft² | Btuh/ft²-°F | ft²-°F/Btuh | Btuh/ft² | Btuh | Btuh/ft² | Btuh |
| Walls R-20 Frame Wall: Frm wall, wd ext, 3/8" wood shth, r-20 cav ins, 1/2" gypsum board int fnsh, 2"x6" wood frm, 16" o.c. stud | n | 27 | 0.062 | 20.0 | 4.65 | 126 | 0.44 | 12 |

Partitions
(none)

Windows
(none)

Doors
(none)

Ceilings
(none)

Floors
(none)

Bold/italic values have been manually overridden



Project Information

For: Elevation Builders
 2419 Forest Lane, Driggs, ID 83452

Design Conditions

| | | | | | |
|------------------|---------|-----------------------------|----------------------|----------------|----------------|
| Location: | | Indoor: | | Heating | Cooling |
| Driggs, Idaho | | Indoor temperature (°F) | | 72 | 75 |
| Elevation: | 6103 ft | Design TD (°F) | | 75 | 16 |
| Latitude: | 45°N | Relative humidity (%) | | 30 | 50 |
| Outdoor: | | Moisture difference (gr/lb) | | 39.1 | -33.9 |
| | | Heating | Cooling | | |
| Dry bulb (°F) | | -3 | 91 | | |
| Daily range (°F) | | - | 33 (H) | | |
| Wet bulb (°F) | | - | 60 | | |
| Wind speed (mph) | | 15.0 | 7.5 | | |
| | | | Infiltration: | | |
| | | | Method | Simplified | |
| | | | Construction quality | Semi-tight | |
| | | | Fireplaces | 0 | |

Construction descriptions

| | Or | Area ft² | U-value Btuh/ft²-°F | Insul R ft²-°F/Btuh | Htg HTM Btuh/ft² | Loss Btuh | Clg HTM Btuh/ft² | Gain Btuh |
|--|-----|-------------|------------------------|------------------------|---------------------|--------------|---------------------|--------------|
| Walls | | | | | | | | |
| R-20 Frame Wall: Frm wall, wd ext, 3/8" wood shth, r-20 cav ins, 1/2" gypsum board int fnsh, 2"x6" wood frm, 16" o.c. stud | n | 54 | 0.062 | 20.0 | 4.65 | 251 | 0.44 | 24 |
| | e | 51 | 0.062 | 20.0 | 4.65 | 237 | 0.44 | 22 |
| | w | 51 | 0.062 | 20.0 | 4.65 | 237 | 0.44 | 22 |
| | all | 156 | 0.062 | 20.0 | 4.65 | 725 | 0.44 | 68 |

Partitions
(none)

Windows
(none)

Doors
(none)

| | | | | | | | | |
|--|--|----|-------|------|------|----|------|----|
| Ceilings | | | | | | | | |
| R49 Attic: Attic ceiling, asphalt shingles roof mat, r-49 ceil ins, 1/2" gypsum board int fnsh | | 34 | 0.022 | 49.0 | 1.65 | 56 | 0.98 | 33 |

Floors
(none)

Bold/italic values have been manually overridden



Project Information

For: Elevation Builders
 2419 Forest Lane, Driggs, ID 83452

Design Conditions

| | | | | |
|---|--|---|--|---|
| Location: Driggs, Idaho Elevation: 6103 ft Latitude: 45°N | | Indoor: Indoor temperature (°F) 72 Design TD (°F) 75 Relative humidity (%) 30 Moisture difference (gr/lb) 39.1 | Heating 72 75 30 39.1 | Cooling 75 16 50 -33.9 |
| Outdoor: Dry bulb (°F) Daily range (°F) Wet bulb (°F) Wind speed (mph) | Heating -3 - - 15.0 | Cooling 91 33 (H) 60 7.5 | Infiltration: Method Simplified Construction quality Semi-tight Fireplaces 0 | |

Construction descriptions

| Construction descriptions | Or | Area ft ² | U-value Btuh/ft ² -°F | Insul R ft ² -°F/Btuh | Htg HTM Btuh/ft ² | Loss Btuh | Clg HTM Btuh/ft ² | Gain Btuh |
|--|-----|-------------------------|-------------------------------------|-------------------------------------|---------------------------------|--------------|---------------------------------|--------------|
| Walls | | | | | | | | |
| R-20 Frame Wall: Frm wall, wd ext, 3/8" wood shth, r-20 cav ins, 1/2" gypsum board int fnsh, 2"x6" wood frm, 16" o.c. stud | n | 182 | 0.062 | 20.0 | 4.65 | 846 | 0.44 | 80 |
| | e | 66 | 0.062 | 20.0 | 4.65 | 307 | 0.44 | 29 |
| | w | 75 | 0.062 | 20.0 | 4.65 | 349 | 0.44 | 33 |
| | all | 323 | 0.062 | 20.0 | 4.65 | 1502 | 0.44 | 141 |
| Partitions (none) | | | | | | | | |
| Windows | | | | | | | | |
| Low E 2012: 2 glazing, clr outr, air gas, mtl no brk frm mat, clr innr, 1/4" gap, 1/8" thk; 6.67 ft head ht | n | 16 | 0.320 | 0 | 24.0 | 384 | 11.2 | 179 |
| Doors (none) | | | | | | | | |
| Ceilings | | | | | | | | |
| R49 Attic: Attic ceiling, asphalt shingles roof mat, r-49 ceil ins, 1/2" gypsum board int fnsh | | 565 | 0.022 | 49.0 | 1.65 | 933 | 0.98 | 552 |
| Floors (none) | | | | | | | | |

Bold/italic values have been manually overridden



Project Information

For: Elevation Builders
 2419 Forest Lane, Driggs, ID 83452

Design Conditions

| | | | | | |
|--------------------|----------------|-----------------------------|----------------------|----------------|----------------|
| Location: | | Indoor: | | Heating | Cooling |
| Driggs, Idaho | | Indoor temperature (°F) | | 72 | 75 |
| Elevation: 6103 ft | | Design TD (°F) | | 75 | 16 |
| Latitude: 45°N | | Relative humidity (%) | | 30 | 50 |
| | | Moisture difference (gr/lb) | | 39.1 | -33.9 |
| Outdoor: | Heating | Cooling | Infiltration: | | |
| Drybulb (°F) | -3 | 91 | Method | | |
| Daily range (°F) | - | 33 (H) | Simplified | | |
| Wet bulb (°F) | - | 60 | Construction quality | | |
| Wind speed (mph) | 15.0 | 7.5 | Fireplaces | | |
| | | | Semi-tight | | |
| | | | 0 | | |

Construction descriptions

| | Or | Area | U-value | Insul R | Htg HTM | Loss | Clg HTM | Gain |
|--|----|------|-------------|-------------|----------|------|----------|------|
| | | ft² | Btuh/ft²-°F | ft²-°F/Btuh | Btuh/ft² | Btuh | Btuh/ft² | Btuh |
| Walls | | | | | | | | |
| R-20 Frame Wall: Frm wall, wd ext, 3/8" wood shth, r-20 cav ins, 1/2" gypsum board int fnsh, 2"x6" wood frm, 16" o.c. stud | w | 51 | 0.062 | 20.0 | 4.65 | 237 | 0.44 | 22 |
| Partitions | | | | | | | | |
| (none) | | | | | | | | |
| Windows | | | | | | | | |
| (none) | | | | | | | | |
| Doors | | | | | | | | |
| (none) | | | | | | | | |
| Ceilings | | | | | | | | |
| R49 Attic: Attic ceiling, asphalt shingles roof mat, r-49 ceil ins, 1/2" gypsum board int fnsh | | 68 | 0.022 | 49.0 | 1.65 | 112 | 0.98 | 66 |
| Floors | | | | | | | | |
| (none) | | | | | | | | |

Bold/italic values have been manually overridden



Project Information

For: Elevation Builders
 2419 Forest Lane, Driggs, ID 83452

Design Conditions

| | | | | |
|--|--|---|--|---|
| Location: Driggs, Idaho Elevation: 6103 ft Latitude: 45°N | | Indoor: Indoor temperature (°F) 72 Design TD (°F) 75 Relative humidity (%) 30 Moisture difference (gr/lb) 39.1 | Heating 72 75 30 39.1 | Cooling 75 16 50 -33.9 |
| Outdoor: Drybulb (°F) Daily range (°F) Wet bulb (°F) Wind speed (mph) | Heating -3 - - 15.0 | Cooling 91 33 (H) 60 7.5 | Infiltration: Method Simplified Construction quality Semi-tight Fireplaces 0 | |

Construction descriptions

| Construction descriptions | Or | Area ft ² | U-value Btuh/ft ² -°F | Insul R ft ² -°F/Btuh | Htg HTM Btuh/ft ² | Loss Btuh | Clg HTM Btuh/ft ² | Gain Btuh |
|--|----|-------------------------|-------------------------------------|-------------------------------------|---------------------------------|--------------|---------------------------------|--------------|
| Walls R-20 Frame Wall: Frm wall, wd ext, 3/8" wood shth, r-20 cav ins, 1/2" gypsum board int fnsh, 2"x6" wood frm, 16" o.c. stud | w | 113 | 0.062 | 20.0 | 4.65 | 525 | 0.44 | 49 |
| Partitions (none) | | | | | | | | |
| Windows Low E 2012: 2 glazing, clr outr, air gas, mtl no brk frm mat, clr innr, 1/4" gap, 1/8" thk; 6.67 ft head ht | w | 16 | 0.320 | 0 | 24.0 | 384 | 35.0 | 560 |
| Doors (none) | | | | | | | | |
| Ceilings R49 Attic: Attic ceiling, asphalt shingles roof mat, r-49 ceil ins, 1/2" gypsum board int fnsh | | 172 | 0.022 | 49.0 | 1.65 | 284 | 0.98 | 168 |
| Floors (none) | | | | | | | | |

Bold/italic values have been manually overridden



Project Information

For: Elevation Builders
 2419 Forest Lane, Driggs, ID 83452

Design Conditions

| | | | | | |
|--------------------|----------------|-----------------------------|----------------------|----------------|----------------|
| Location: | | Indoor: | | Heating | Cooling |
| Driggs, Idaho | | Indoor temperature (°F) | | 72 | 75 |
| Elevation: 6103 ft | | Design TD (°F) | | 75 | 16 |
| Latitude: 45°N | | Relative humidity (%) | | 30 | 50 |
| | | Moisture difference (gr/lb) | | 39.1 | -33.9 |
| Outdoor: | Heating | Cooling | Infiltration: | | |
| Drybulb (°F) | -3 | 91 | Method | | |
| Daily range (°F) | - | 33 (H) | Simplified | | |
| Wet bulb (°F) | - | 60 | Construction quality | | |
| Wind speed (mph) | 15.0 | 7.5 | Fireplaces | | |
| | | | Semi-tight | | |
| | | | 0 | | |

Construction descriptions

| | Or | Area | U-value | Insul R | Htg HTM | Loss | Clg HTM | Gain |
|--|----|------|-------------|-------------|----------|------|----------|------|
| | | ft² | Btuh/ft²-°F | ft²-°F/Btuh | Btuh/ft² | Btuh | Btuh/ft² | Btuh |
| Walls | | | | | | | | |
| R-20 Frame Wall: Frm wall, wd ext, 3/8" wood shth, r-20 cav ins, 1/2" gypsum board int fnsh, 2"x6" wood frm, 16" o.c. stud | w | 51 | 0.062 | 20.0 | 4.65 | 237 | 0.44 | 22 |
| Partitions | | | | | | | | |
| (none) | | | | | | | | |
| Windows | | | | | | | | |
| (none) | | | | | | | | |
| Doors | | | | | | | | |
| (none) | | | | | | | | |
| Ceilings | | | | | | | | |
| R49 Attic: Attic ceiling, asphalt shingles roof mat, r-49 ceil ins, 1/2" gypsum board int fnsh | | 68 | 0.022 | 49.0 | 1.65 | 112 | 0.98 | 66 |
| Floors | | | | | | | | |
| (none) | | | | | | | | |

Bold/italic values have been manually overridden



Project Information

For: Elevation Builders
 2419 Forest Lane, Driggs, ID 83452

Design Conditions

| | | | | | |
|--------------------|----------------|-----------------------------|----------------------|----------------|----------------|
| Location: | | Indoor: | | Heating | Cooling |
| Driggs, Idaho | | Indoor temperature (°F) | | 72 | 75 |
| Elevation: 6103 ft | | Design TD (°F) | | 75 | 16 |
| Latitude: 45°N | | Relative humidity (%) | | 30 | 50 |
| | | Moisture difference (gr/lb) | | 39.1 | -33.9 |
| Outdoor: | Heating | Cooling | Infiltration: | | |
| Drybulb (°F) | -3 | 91 | Method | | |
| Daily range (°F) | - | 33 (H) | Construction quality | | |
| Wet bulb (°F) | - | 60 | Fireplaces | | |
| Wind speed (mph) | 15.0 | 7.5 | Simplified | | |
| | | | Semi-tight | | |
| | | | 0 | | |

Construction descriptions

| | Or | Area | U-value | Insul R | Htg HTM | Loss | Clg HTM | Gain |
|--|-----|------|-------------|-------------|----------|------|----------|------|
| | | ft² | Btuh/ft²-°F | ft²-°F/Btuh | Btuh/ft² | Btuh | Btuh/ft² | Btuh |
| Walls | | | | | | | | |
| R-20 Frame Wall: Frm wall, wd ext, 3/8" wood shth, r-20 cav ins, 1/2" gypsum board int fnsh, 2"x6" wood frm, 16" o.c. stud | s | 138 | 0.062 | 20.0 | 4.65 | 642 | 0.44 | 60 |
| | w | 95 | 0.062 | 20.0 | 4.65 | 442 | 0.44 | 42 |
| | all | 233 | 0.062 | 20.0 | 4.65 | 1083 | 0.44 | 102 |
| Partitions | | | | | | | | |
| (none) | | | | | | | | |
| Windows | | | | | | | | |
| Low E 2012: 2 glazing, clr outr, air gas, mtl no brk frm mat, clr innr, 1/4" gap, 1/8" thk; 6.67 ft head ht | w | 16 | 0.320 | 0 | 24.0 | 384 | 35.0 | 560 |
| Doors | | | | | | | | |
| (none) | | | | | | | | |
| Ceilings | | | | | | | | |
| R49 Attic: Attic ceiling, asphalt shingles roof mat, r-49 ceil ins, 1/2" gypsum board int fnsh | | 198 | 0.022 | 49.0 | 1.65 | 327 | 0.98 | 193 |
| Floors | | | | | | | | |
| (none) | | | | | | | | |

Bold/italic values have been manually overridden



Project Information

For: Elevation Builders
 2419 Forest Lane, Driggs, ID 83452

Design Conditions

| | | | | | |
|------------------|---------|-----------------------------|----------------------|----------------|----------------|
| Location: | | Indoor: | | Heating | Cooling |
| Driggs, Idaho | | Indoor temperature (°F) | | 72 | 75 |
| Elevation: | 6103 ft | Design TD (°F) | | 75 | 16 |
| Latitude: | 45°N | Relative humidity (%) | | 30 | 50 |
| Outdoor: | | Moisture difference (gr/lb) | | 39.1 | -33.9 |
| | | Heating | Cooling | | |
| Drybulb (°F) | | -3 | 91 | | |
| Daily range (°F) | | - | 33 (H) | | |
| Wet bulb (°F) | | - | 60 | | |
| Wind speed (mph) | | 15.0 | 7.5 | | |
| | | | Infiltration: | | |
| | | | Method | Simplified | |
| | | | Construction quality | Semi-tight | |
| | | | Fireplaces | 0 | |

Construction descriptions

Walls

R-20 Frame Wall: Frm wall, wd ext, 3/8" wood shth, r-20 cav ins, 1/2" gypsum board int fnsh, 2"x6" wood frm, 16" o.c. stud

| Or | Area ft² | U-value Btuh/ft²-°F | Insul R ft²-°F/Btuh | Htg HTM Btuh/ft² | Loss Btuh | Clg HTM Btuh/ft² | Gain Btuh |
|-----|-------------|------------------------|------------------------|---------------------|--------------|---------------------|--------------|
| e | 135 | 0.062 | 20.0 | 4.65 | 628 | 0.44 | 59 |
| s | 98 | 0.062 | 20.0 | 4.65 | 456 | 0.44 | 43 |
| all | 233 | 0.062 | 20.0 | 4.65 | 1083 | 0.44 | 102 |

Partitions

(none)

Windows

Low E 2012: 2 glazing, clr outr, air gas, mtl no brk frm mat, clr innr, 1/4" gap, 1/8" thk; 6.67 ft head ht

| | | | | | | | |
|---|----|-------|---|------|-----|------|-----|
| s | 16 | 0.320 | 0 | 24.0 | 384 | 19.9 | 318 |
|---|----|-------|---|------|-----|------|-----|

Doors

(none)

Ceilings

R49 Attic: Attic ceiling, asphalt shingles roof mat, r-49 ceil ins, 1/2" gypsum board int fnsh

| | | | | | | | |
|--|-----|-------|------|------|-----|------|-----|
| | 190 | 0.022 | 49.0 | 1.65 | 314 | 0.98 | 185 |
|--|-----|-------|------|------|-----|------|-----|

Floors

(none)

Bold/italic values have been manually overridden



Project Information

For: Elevation Builders
 2419 Forest Lane, Driggs, ID 83452

Design Conditions

| | | | | | |
|--------------------|----------------|-----------------------------|----------------------|----------------|----------------|
| Location: | | Indoor: | | Heating | Cooling |
| Driggs, Idaho | | Indoor temperature (°F) | | 72 | 75 |
| Elevation: 6103 ft | | Design TD (°F) | | 75 | 16 |
| Latitude: 45°N | | Relative humidity (%) | | 30 | 50 |
| | | Moisture difference (gr/lb) | | 39.1 | -33.9 |
| Outdoor: | Heating | Cooling | Infiltration: | | |
| Drybulb (°F) | -3 | 91 | Method | | |
| Daily range (°F) | - | 33 (H) | Construction quality | | |
| Wet bulb (°F) | - | 60 | Fireplaces | | |
| Wind speed (mph) | 15.0 | 7.5 | Simplified | | |
| | | | Semi-tight | | |
| | | | 0 | | |

Construction descriptions

| | Or | Area | U-value | Insul R | Htg HTM | Loss | Clg HTM | Gain |
|--|-----|------|-------------|-------------|----------|------|----------|------|
| | | ft² | Btuh/ft²-°F | ft²-°F/Btuh | Btuh/ft² | Btuh | Btuh/ft² | Btuh |
| Walls | | | | | | | | |
| 15B-15sfc-4: Bg wall, heavy dry or light damp soil, concrete wall, r-15 ins, 8" thk | n | 441 | 0.041 | 15.0 | 3.83 | 1687 | 0.16 | 72 |
| | e | 513 | 0.041 | 15.0 | 3.83 | 1962 | 0.16 | 83 |
| | s | 441 | 0.041 | 15.0 | 3.83 | 1687 | 0.16 | 72 |
| | w | 513 | 0.041 | 15.0 | 3.83 | 1962 | 0.16 | 83 |
| | all | 1908 | 0.041 | 15.0 | 3.83 | 7298 | 0.16 | 310 |
| Partitions | | | | | | | | |
| (none) | | | | | | | | |
| Windows | | | | | | | | |
| (none) | | | | | | | | |
| Doors | | | | | | | | |
| (none) | | | | | | | | |
| Ceilings | | | | | | | | |
| R49 Attic: Attic ceiling, asphalt shingles roof mat, r-49 ceil ins, 1/2" gypsum board int fnsh | | 14 | 0.022 | 49.0 | 1.65 | 23 | 0.98 | 14 |
| Floors | | | | | | | | |
| 21A-32t: Bg floor, heavy dry or light damp soil, 4' depth | | 1961 | 0.020 | 0 | 1.50 | 2942 | 0 | 0 |

Bold/italic values have been manually overridden



Duct system multi orientation report

Entire House

Rockview Designs

Job: 2349 Forest Lane
 Date:
 By: Rockview Designs (MM)

Project Information

For: Elevation Builders
 2419 Forest Lane, Driggs, ID 83452

Group 1: (N, NE, E, SE, S, SW, W, NW)

| Duct Name | (N) | | | (NE) | | | (E) | | | (SE) | | |
|------------------|---------|----------|-----------|---------|----------|-----------|---------|----------|-----------|---------|----------|-----------|
| | Reg CFM | Reg Size | Duct Size | Reg CFM | Reg Size | Duct Size | Reg CFM | Reg Size | Duct Size | Reg CFM | Reg Size | Duct Size |
| Supply Branches | | | | | | | | | | | | |
| Bathroom 2 | 14 h | 10x2 | 4 | 14 h | 10x2 | 4 | 14 h | 10x2 | 4 | 14 h | 10x2 | 4 |
| Bathroom 3 | 14 h | 10x2 | 4 | 14 h | 10x2 | 4 | 14 h | 10x2 | 4 | 14 h | 10x2 | 4 |
| Bedroom 2 | 53 c | 10x4 | 5 | 53 c | 10x4 | 5 | 53 c | 10x4 | 5 | 53 c | 10x4 | 5 |
| Bedroom 3 | 73 h | 10x4 | 6 | 73 h | 10x4 | 6 | 73 h | 10x4 | 6 | 73 h | 10x4 | 6 |
| Bedroom 4 | 72 h | 10x4 | 6 | 72 h | 10x4 | 6 | 72 h | 10x4 | 6 | 72 h | 10x4 | 6 |
| Crawlspace | 160 h | 10x4 | 0 | 160 h | 10x4 | 0 | 160 h | 10x4 | 0 | 160 h | 10x4 | 0 |
| Entry | 42 h | 10x4 | 4 | 42 h | 10x4 | 4 | 42 h | 10x4 | 4 | 42 h | 10x4 | 4 |
| Family Room | 73 h | 10x4 | 6 | 73 h | 10x4 | 6 | 73 h | 10x4 | 6 | 73 h | 10x4 | 6 |
| Family Room-A | 73 h | 10x4 | 6 | 73 h | 10x4 | 6 | 73 h | 10x4 | 6 | 73 h | 10x4 | 6 |
| Kitchen | 47 c | 5 | 4 | 47 c | 5 | 4 | 47 c | 5 | 4 | 47 c | 5 | 4 |
| Laundry | 43 h | 10x4 | 4 | 43 h | 10x4 | 4 | 43 h | 10x4 | 4 | 43 h | 10x4 | 4 |
| Living Room | 96 c | 12x4 | 7 | 96 c | 12x4 | 7 | 96 c | 12x4 | 7 | 96 c | 12x4 | 7 |
| Living Room-A | 96 c | 12x4 | 7 | 96 c | 12x4 | 7 | 96 c | 12x4 | 7 | 96 c | 12x4 | 7 |
| Living Room-B | 96 c | 12x4 | 7 | 96 c | 12x4 | 7 | 96 c | 12x4 | 7 | 96 c | 12x4 | 7 |
| Living Room-C | 96 c | 12x4 | 7 | 96 c | 12x4 | 7 | 96 c | 12x4 | 7 | 96 c | 12x4 | 7 |
| Living Room-D | 96 c | 12x4 | 7 | 96 c | 12x4 | 7 | 96 c | 12x4 | 7 | 96 c | 12x4 | 7 |
| Master Bathroom | 51 h | 10x4 | 5 | 51 h | 10x4 | 5 | 51 h | 10x4 | 5 | 51 h | 10x4 | 5 |
| Master Bedroom | 86 c | 10x4 | 6 | 86 c | 10x4 | 6 | 86 c | 10x4 | 6 | 86 c | 10x4 | 6 |
| Master Bedroom-A | 86 c | 10x4 | 6 | 86 c | 10x4 | 6 | 86 c | 10x4 | 6 | 86 c | 10x4 | 6 |
| Master Closet | 17 h | 10x4 | 4 | 17 h | 10x4 | 4 | 17 h | 10x4 | 4 | 17 h | 10x4 | 4 |
| Office | 97 h | 12x4 | 7 | 97 h | 12x4 | 7 | 97 h | 12x4 | 7 | 97 h | 12x4 | 7 |
| Powder | 26 h | 10x2 | 4 | 26 h | 10x2 | 4 | 26 h | 10x2 | 4 | 26 h | 10x2 | 4 |
| Supply Trunks | | | | | | | | | | | | |
| st1 | 891 c | | 20x10 | 891 c | | 20x10 | 891 c | | 20x10 | 891 c | | 20x10 |
| srs1 | 1179 c | | 20x20 | 1179 c | | 20x20 | 1179 c | | 20x20 | 1179 c | | 20x20 |
| st2 | 365 h | | 14x8 | 365 h | | 14x8 | 365 h | | 14x8 | 365 h | | 14x8 |
| st1C | 288 c | | 12x8 | 288 c | | 12x8 | 288 c | | 12x8 | 288 c | | 12x8 |
| st1A | 719 c | | 20x8 | 719 c | | 20x8 | 719 c | | 20x8 | 719 c | | 20x8 |
| st1B | 577 c | | 20x8 | 577 c | | 20x8 | 577 c | | 20x8 | 577 c | | 20x8 |
| st7 | 133 h | | 8x8 | 133 h | | 8x8 | 133 h | | 8x8 | 133 h | | 8x8 |
| st8 | 232 h | | 10x8 | 232 h | | 10x8 | 232 h | | 10x8 | 232 h | | 10x8 |
| Return Branches | | | | | | | | | | | | |
| rb1 | 97 h | 14x6 | 7 | 97 h | 14x6 | 7 | 97 h | 14x6 | 7 | 97 h | 14x6 | 7 |
| rb11 | 111 h | 14x6 | 7 | 111 h | 14x6 | 7 | 111 h | 14x6 | 7 | 111 h | 14x6 | 7 |
| rb8 | 145 c | 15x6 | 8 | 145 c | 15x6 | 8 | 145 c | 15x6 | 8 | 145 c | 15x6 | 8 |
| rb9 | 192 c | 15x6 | 8 | 192 c | 15x6 | 8 | 192 c | 15x6 | 8 | 192 c | 15x6 | 8 |
| rb10 | 192 c | 15x6 | 8 | 192 c | 15x6 | 8 | 192 c | 15x6 | 8 | 192 c | 15x6 | 8 |
| rb7 | 173 c | 15x6 | 8 | 173 c | 15x6 | 8 | 173 c | 15x6 | 8 | 173 c | 15x6 | 8 |
| rb3 | 100 h | 14x6 | 7 | 100 h | 14x6 | 7 | 100 h | 14x6 | 7 | 100 h | 14x6 | 7 |
| rb5 | 200 h | 14x6 | 8 | 200 h | 14x6 | 8 | 200 h | 14x6 | 8 | 200 h | 14x6 | 8 |

| | | | | | | | | | | | | |
|----------------|--------|------|-------|--------|------|-------|--------|------|-------|--------|------|-------|
| rb2 | 112 h | 14x6 | 7 | 112 h | 14x6 | 7 | 112 h | 14x6 | 7 | 112 h | 14x6 | 7 |
| rb4 | 113 h | 14x6 | 6 | 113 h | 14x6 | 6 | 113 h | 14x6 | 6 | 113 h | 14x6 | 6 |
| Return Trunks | | | | | | | | | | | | |
| rt1 | 1260 h | | 20x10 | 1260 h | | 20x10 | 1260 h | | 20x10 | 1260 h | | 20x10 |
| rrs1 | 1260 h | | 20x25 | 1260 h | | 20x25 | 1260 h | | 20x25 | 1260 h | | 20x25 |
| rt1B | 574 c | | 18x8 | 574 c | | 18x8 | 574 c | | 18x8 | 574 c | | 18x8 |
| rt1A | 891 c | | 20x8 | 891 c | | 20x8 | 891 c | | 20x8 | 891 c | | 20x8 |
| Friction Rates | | | | | | | | | | | | |
| Heating FR | 0.044 | | | 0.044 | | | 0.044 | | | 0.044 | | |
| Cooling FR | 0.051 | | | 0.051 | | | 0.051 | | | 0.051 | | |

Project Information

For: Elevation Builders
2419 Forest Lane, Driggs, ID 83452

| Duct Name | (S) | | | (SW) | | | (W) | | | (NW) | | |
|------------------------|---------|----------|-----------|---------|----------|-----------|---------|----------|-----------|---------|----------|-----------|
| | Reg CFM | Reg Size | Duct Size | Reg CFM | Reg Size | Duct Size | Reg CFM | Reg Size | Duct Size | Reg CFM | Reg Size | Duct Size |
| Supply Branches | | | | | | | | | | | | |
| Bathroom 2 | 14 h | 10x2 | 4 | 14 h | 10x2 | 4 | 14 h | 10x2 | 4 | 14 h | 10x2 | 4 |
| Bathroom 3 | 14 h | 10x2 | 4 | 14 h | 10x2 | 4 | 14 h | 10x2 | 4 | 14 h | 10x2 | 4 |
| Bedroom 2 | 53 c | 10x4 | 5 | 53 c | 10x4 | 5 | 53 c | 10x4 | 5 | 53 c | 10x4 | 5 |
| Bedroom 3 | 73 h | 10x4 | 6 | 73 h | 10x4 | 6 | 73 h | 10x4 | 6 | 73 h | 10x4 | 6 |
| Bedroom 4 | 72 h | 10x4 | 6 | 72 h | 10x4 | 6 | 72 h | 10x4 | 6 | 72 h | 10x4 | 6 |
| Crawlspace | 160 h | 10x4 | 0 | 160 h | 10x4 | 0 | 160 h | 10x4 | 0 | 160 h | 10x4 | 0 |
| Entry | 42 h | 10x4 | 4 | 42 h | 10x4 | 4 | 42 h | 10x4 | 4 | 42 h | 10x4 | 4 |
| Family Room | 73 h | 10x4 | 6 | 73 h | 10x4 | 6 | 73 h | 10x4 | 6 | 73 h | 10x4 | 6 |
| Family Room-A | 73 h | 10x4 | 6 | 73 h | 10x4 | 6 | 73 h | 10x4 | 6 | 73 h | 10x4 | 6 |
| Kitchen | 47 c | 5 | 4 | 47 c | 5 | 4 | 47 c | 5 | 4 | 47 c | 5 | 4 |
| Laundry | 43 h | 10x4 | 4 | 43 h | 10x4 | 4 | 43 h | 10x4 | 4 | 43 h | 10x4 | 4 |
| Living Room | 96 c | 12x4 | 7 | 96 c | 12x4 | 7 | 96 c | 12x4 | 7 | 96 c | 12x4 | 7 |
| Living Room-A | 96 c | 12x4 | 7 | 96 c | 12x4 | 7 | 96 c | 12x4 | 7 | 96 c | 12x4 | 7 |
| Living Room-B | 96 c | 12x4 | 7 | 96 c | 12x4 | 7 | 96 c | 12x4 | 7 | 96 c | 12x4 | 7 |
| Living Room-C | 96 c | 12x4 | 7 | 96 c | 12x4 | 7 | 96 c | 12x4 | 7 | 96 c | 12x4 | 7 |
| Living Room-D | 96 c | 12x4 | 7 | 96 c | 12x4 | 7 | 96 c | 12x4 | 7 | 96 c | 12x4 | 7 |
| Master Bathroom | 51 h | 10x4 | 5 | 51 h | 10x4 | 5 | 51 h | 10x4 | 5 | 51 h | 10x4 | 5 |
| Master Bedroom | 86 c | 10x4 | 6 | 86 c | 10x4 | 6 | 86 c | 10x4 | 6 | 86 c | 10x4 | 6 |
| Master Bedroom-A | 86 c | 10x4 | 6 | 86 c | 10x4 | 6 | 86 c | 10x4 | 6 | 86 c | 10x4 | 6 |
| Master Closet | 17 h | 10x4 | 4 | 17 h | 10x4 | 4 | 17 h | 10x4 | 4 | 17 h | 10x4 | 4 |
| Office | 97 h | 12x4 | 7 | 97 h | 12x4 | 7 | 97 h | 12x4 | 7 | 97 h | 12x4 | 7 |
| Powder | 26 h | 10x2 | 4 | 26 h | 10x2 | 4 | 26 h | 10x2 | 4 | 26 h | 10x2 | 4 |
| Supply Trunks | | | | | | | | | | | | |
| st1 | 891 c | | 20x10 | 891 c | | 20x10 | 891 c | | 20x10 | 891 c | | 20x10 |
| srs1 | 1179 c | | 20x20 | 1179 c | | 20x20 | 1179 c | | 20x20 | 1179 c | | 20x20 |
| st2 | 365 h | | 14x8 | 365 h | | 14x8 | 365 h | | 14x8 | 365 h | | 14x8 |
| st1C | 288 c | | 12x8 | 288 c | | 12x8 | 288 c | | 12x8 | 288 c | | 12x8 |
| st1A | 719 c | | 20x8 | 719 c | | 20x8 | 719 c | | 20x8 | 719 c | | 20x8 |
| st1B | 577 c | | 20x8 | 577 c | | 20x8 | 577 c | | 20x8 | 577 c | | 20x8 |
| st7 | 133 h | | 8x8 | 133 h | | 8x8 | 133 h | | 8x8 | 133 h | | 8x8 |
| st8 | 232 h | | 10x8 | 232 h | | 10x8 | 232 h | | 10x8 | 232 h | | 10x8 |
| Return Branches | | | | | | | | | | | | |
| rb1 | 97 h | 14x6 | 7 | 97 h | 14x6 | 7 | 97 h | 14x6 | 7 | 97 h | 14x6 | 7 |
| rb11 | 111 h | 14x6 | 7 | 111 h | 14x6 | 7 | 111 h | 14x6 | 7 | 111 h | 14x6 | 7 |
| rb8 | 145 c | 15x6 | 8 | 145 c | 15x6 | 8 | 145 c | 15x6 | 8 | 145 c | 15x6 | 8 |
| rb9 | 192 c | 15x6 | 8 | 192 c | 15x6 | 8 | 192 c | 15x6 | 8 | 192 c | 15x6 | 8 |
| rb10 | 192 c | 15x6 | 8 | 192 c | 15x6 | 8 | 192 c | 15x6 | 8 | 192 c | 15x6 | 8 |
| rb7 | 173 c | 15x6 | 8 | 173 c | 15x6 | 8 | 173 c | 15x6 | 8 | 173 c | 15x6 | 8 |
| rb3 | 100 h | 14x6 | 7 | 100 h | 14x6 | 7 | 100 h | 14x6 | 7 | 100 h | 14x6 | 7 |
| rb5 | 200 h | 14x6 | 8 | 200 h | 14x6 | 8 | 200 h | 14x6 | 8 | 200 h | 14x6 | 8 |
| rb2 | 112 h | 14x6 | 7 | 112 h | 14x6 | 7 | 112 h | 14x6 | 7 | 112 h | 14x6 | 7 |
| rb4 | 113 h | 14x6 | 6 | 113 h | 14x6 | 6 | 113 h | 14x6 | 6 | 113 h | 14x6 | 6 |
| Return Trunks | | | | | | | | | | | | |
| rt1 | 1260 h | | 20x10 | 1260 h | | 20x10 | 1260 h | | 20x10 | 1260 h | | 20x10 |
| rrs1 | 1260 h | | 20x25 | 1260 h | | 20x25 | 1260 h | | 20x25 | 1260 h | | 20x25 |
| rt1B | 574 c | | 18x8 | 574 c | | 18x8 | 574 c | | 18x8 | 574 c | | 18x8 |
| rt1A | 891 c | | 20x8 | 891 c | | 20x8 | 891 c | | 20x8 | 891 c | | 20x8 |
| Friction Rates | | | | | | | | | | | | |
| Heating FR | 0.044 | | | 0.044 | | | 0.044 | | | 0.044 | | |



| | | | | | | | | | | | | |
|------------|-------|--|--|-------|--|--|-------|--|--|-------|--|--|
| Cooling FR | 0.051 | | | 0.051 | | | 0.051 | | | 0.051 | | |
|------------|-------|--|--|-------|--|--|-------|--|--|-------|--|--|

Project Information

For: Elevation Builders
2419 Forest Lane, Driggs, ID 83452

| Duct Name | Largest | | | Smallest | | |
|------------------------|---------|----------|-----------|----------|----------|-----------|
| | Reg CFM | Reg Size | Duct Size | Reg CFM | Reg Size | Duct Size |
| Supply Branches | | | | | | |
| Bathroom 2 | 14 h | 10x2 | 4 | 14 h | 10x2 | 4 |
| Bathroom 3 | 14 h | 10x2 | 4 | 14 h | 10x2 | 4 |
| Bedroom 2 | 53 c | 10x4 | 5 | 53 c | 10x4 | 5 |
| Bedroom 3 | 73 h | 10x4 | 6 | 73 h | 10x4 | 6 |
| Bedroom 4 | 72 h | 10x4 | 6 | 72 h | 10x4 | 6 |
| Crawlspace | 160 h | 10x4 | 0 | 160 h | 10x4 | 0 |
| Entry | 42 h | 10x4 | 4 | 42 h | 10x4 | 4 |
| Family Room | 73 h | 10x4 | 6 | 73 h | 10x4 | 6 |
| Family Room-A | 73 h | 10x4 | 6 | 73 h | 10x4 | 6 |
| Kitchen | 47 c | 5 | 4 | 47 c | 5 | 4 |
| Laundry | 43 h | 10x4 | 4 | 43 h | 10x4 | 4 |
| Living Room | 96 c | 12x4 | 7 | 96 c | 12x4 | 7 |
| Living Room-A | 96 c | 12x4 | 7 | 96 c | 12x4 | 7 |
| Living Room-B | 96 c | 12x4 | 7 | 96 c | 12x4 | 7 |
| Living Room-C | 96 c | 12x4 | 7 | 96 c | 12x4 | 7 |
| Living Room-D | 96 c | 12x4 | 7 | 96 c | 12x4 | 7 |
| Master Bathroom | 51 h | 10x4 | 5 | 51 h | 10x4 | 5 |
| Master Bedroom | 86 c | 10x4 | 6 | 86 c | 10x4 | 6 |
| Master Bedroom-A | 86 c | 10x4 | 6 | 86 c | 10x4 | 6 |
| Master Closet | 17 h | 10x4 | 4 | 17 h | 10x4 | 4 |
| Office | 97 h | 12x4 | 7 | 97 h | 12x4 | 7 |
| Powder | 26 h | 10x2 | 4 | 26 h | 10x2 | 4 |
| Supply Trunks | | | | | | |
| st1 | 891 c | | 20x10 | 891 c | | 20x10 |
| srs1 | 1179 c | | 20x20 | 1179 c | | 20x20 |
| st2 | 365 h | | 14x8 | 365 h | | 14x8 |
| st1C | 288 c | | 12x8 | 288 c | | 12x8 |
| st1A | 719 c | | 20x8 | 719 c | | 20x8 |
| st1B | 577 c | | 20x8 | 577 c | | 20x8 |
| st7 | 133 h | | 8x8 | 133 h | | 8x8 |
| st8 | 232 h | | 10x8 | 232 h | | 10x8 |
| Return Branches | | | | | | |
| rb1 | 97 h | 14x6 | 7 | 97 h | 14x6 | 7 |
| rb11 | 111 h | 14x6 | 7 | 111 h | 14x6 | 7 |
| rb8 | 145 c | 15x6 | 8 | 145 c | 15x6 | 8 |
| rb9 | 192 c | 15x6 | 8 | 192 c | 15x6 | 8 |
| rb10 | 192 c | 15x6 | 8 | 192 c | 15x6 | 8 |
| rb7 | 173 c | 15x6 | 8 | 173 c | 15x6 | 8 |
| rb3 | 100 h | 14x6 | 7 | 100 h | 14x6 | 7 |
| rb5 | 200 h | 14x6 | 8 | 200 h | 14x6 | 8 |
| rb2 | 112 h | 14x6 | 7 | 112 h | 14x6 | 7 |
| rb4 | 113 h | 14x6 | 6 | 113 h | 14x6 | 6 |
| Return Trunks | | | | | | |
| rt1 | 1260 h | | 20x10 | 1260 h | | 20x10 |
| rrs1 | 1260 h | | 20x25 | 1260 h | | 20x25 |
| rt1B | 574 c | | 18x8 | 574 c | | 18x8 |
| rt1A | 891 c | | 20x8 | 891 c | | 20x8 |
| Friction Rates | | | | | | |
| Heating FR | 0.044 | | | 0.044 | | |



| | | | | | | |
|------------|-------|--|--|-------|--|--|
| Cooling FR | 0.051 | | | 0.051 | | |
|------------|-------|--|--|-------|--|--|





Duct System Summary

Entire House
Rockview Designs

Job: 2349 Forest Lane
Date:
By: Rockview Designs (MM)

Project Information

For: Elevation Builders
2419 Forest Lane, Driggs, ID 83452

| | Heating | Cooling |
|------------------------------------|----------------------|----------------------|
| External static pressure | 0.70 in H2O | 0.80 in H2O |
| Pressure losses | 0.36 in H2O | 0.41 in H2O |
| Available static pressure | 0.34 in H2O | 0.39 in H2O |
| Supply / return available pressure | 0.176 / 0.164 in H2O | 0.202 / 0.188 in H2O |
| Lowest friction rate | 0.044 in/100ft | 0.051 in/100ft |
| Actual air flow | 1260 cfm | 1205 cfm |
| Total effective length (TEL) | 766 ft | |

Supply Branch Detail Table

| Name | Design (Btuh) | Htg (cfm) | Clg (cfm) | Design FR | Diam (in) | H x W (in) | Duct Matl | Actual Ln (ft) | Ftg.Eqv Ln (ft) | Trunk |
|------------------|---------------|-----------|-----------|-----------|-----------|------------|-----------|----------------|-----------------|-------|
| Bathroom 2 | h 447 | 14 | 5 | 0.052 | 4.0 | 0x0 | ShMt | 25.0 | 315.0 | st7 |
| Bathroom 3 | h 447 | 14 | 5 | 0.051 | 4.0 | 0x0 | ShMt | 22.0 | 325.0 | st8 |
| Bedroom 2 | c 1022 | 46 | 53 | 0.059 | 5.0 | 0x0 | ShMt | 18.7 | 325.0 | st7 |
| Bedroom 3 | h 2269 | 73 | 69 | 0.050 | 6.0 | 0x0 | ShMt | 36.0 | 315.0 | st8 |
| Bedroom 4 | h 2255 | 72 | 61 | 0.050 | 6.0 | 0x0 | ShMt | 50.3 | 305.0 | st8 |
| Crawlspace | h 507 | 160 | 26 | 0 | 0 | 0x0 | ShMt | 0 | 0 | |
| Entry | h 1305 | 42 | 10 | 0.073 | 4.0 | 0x0 | ShMt | 46.0 | 195.0 | st1B |
| Family Room | h 2272 | 73 | 48 | 0.050 | 6.0 | 0x0 | ShMt | 50.3 | 305.0 | st7 |
| Family Room-A | h 2272 | 73 | 48 | 0.047 | 6.0 | 0x0 | ShMt | 38.0 | 335.0 | st8 |
| Kitchen | c 912 | 0 | 47 | 0.105 | 4.0 | 0x0 | ShMt | 16.7 | 175.0 | st1A |
| Laundry | h 1346 | 43 | 34 | 0.081 | 4.0 | 0x0 | ShMt | 22.3 | 195.0 | st1 |
| Living Room | c 1860 | 72 | 96 | 0.066 | 7.0 | 0x0 | ShMt | 46.7 | 260.0 | st1B |
| Living Room-A | c 1860 | 72 | 96 | 0.067 | 7.0 | 0x0 | ShMt | 30.0 | 270.0 | st1B |
| Living Room-B | c 1860 | 72 | 96 | 0.059 | 7.0 | 0x0 | ShMt | 60.7 | 280.0 | st1C |
| Living Room-C | c 1860 | 72 | 96 | 0.062 | 7.0 | 0x0 | ShMt | 48.0 | 280.0 | st1C |
| Living Room-D | c 1860 | 72 | 96 | 0.051 | 7.0 | 0x0 | ShMt | 51.3 | 345.0 | st1C |
| Master Bathroom | h 1581 | 51 | 46 | 0.086 | 5.0 | 0x0 | ShMt | 14.3 | 190.0 | st1 |
| Master Bedroom | c 1672 | 51 | 86 | 0.108 | 6.0 | 0x0 | ShMt | 31.7 | 155.0 | st1 |
| Master Bedroom-A | c 1672 | 51 | 86 | 0.084 | 6.0 | 0x0 | ShMt | 44.0 | 195.0 | st1B |
| Master Closet | h 531 | 17 | 2 | 0.080 | 4.0 | 0x0 | ShMt | 15.7 | 205.0 | st1 |
| Office | h 3032 | 97 | 95 | 0.080 | 7.0 | 0x0 | ShMt | 55.7 | 165.0 | st1A |
| Powder | h 806 | 26 | 4 | 0.084 | 4.0 | 0x0 | ShMt | 25.7 | 185.0 | st1 |

Supply Trunk Detail Table

| Name | Trunk Type | Htg (cfm) | Clg (cfm) | Design FR | Veloc (fpm) | Diam (in) | H x W (in) | Duct Material | Trunk |
|------|------------|-----------|-----------|-----------|-------------|-------------|----------------|---------------|-------|
| st1 | Peak AVF | 735 | 891 | 0.051 | 641 | <i>15.1</i> | <i>10 x 20</i> | ShtMetl | srs1 |
| srs1 | Peak AVF | 1100 | 1179 | 0.044 | 424 | <i>15.1</i> | <i>20 x 20</i> | ShtMetl | |
| st2 | Peak AVF | 365 | 288 | 0.047 | 469 | 11.0 | 8 x 14 | ShtMetl | srs1 |
| st1C | Peak AVF | 215 | 288 | 0.051 | 433 | 9.9 | 8 x 12 | ShtMetl | st1B |
| st1A | Peak AVF | 548 | 719 | 0.051 | 647 | <i>13.9</i> | <i>8 x 20</i> | ShtMetl | st1 |
| st1B | Peak AVF | 450 | 577 | 0.051 | 519 | <i>13.8</i> | <i>8 x 20</i> | ShtMetl | st1A |
| st7 | Peak AVF | 133 | 106 | 0.050 | 299 | 7.5 | 8 x 8 | ShtMetl | st2 |
| st8 | Peak AVF | 232 | 182 | 0.047 | 417 | 9.3 | 8 x 10 | ShtMetl | st2 |

Return Branch Detail Table

| Name | Grille Size (in) | Htg (cfm) | Clg (cfm) | TEL (ft) | Design FR | Veloc (fpm) | Diam (in) | H x W (in) | Stud/Joist Opening (in) | Duct Matl | Trunk |
|------|------------------|-----------|-----------|----------|-----------|-------------|------------|-------------|-------------------------|-----------|-------|
| rb1 | 0x0 | 97 | 95 | 321.3 | 0.051 | 363 | 7.0 | 0x 0 | | ShMt | rt1B |
| rb11 | 0x0 | 111 | 94 | 369.7 | 0.044 | 415 | 7.0 | 0x 0 | | ShMt | rt1B |
| rb8 | 0x0 | 139 | 145 | 174.3 | 0.094 | 414 | <i>8.0</i> | <i>0x 0</i> | | ShMt | rt1A |
| rb9 | 0x0 | 143 | 192 | 206.3 | 0.091 | 551 | 8.0 | 0x 0 | | ShMt | rt1B |
| rb10 | 0x0 | 143 | 192 | 252.3 | 0.075 | 551 | <i>8.0</i> | <i>0x 0</i> | | ShMt | rt1B |
| rb7 | 0x0 | 102 | 173 | 163.3 | 0.115 | 495 | 8.0 | 0x 0 | | ShMt | rt1A |
| rb3 | 0x0 | 100 | 64 | 113.3 | 0.145 | 376 | 7.0 | 0x 0 | | ShMt | rt1 |
| rb5 | 0x0 | 200 | 108 | 177.7 | 0.092 | 572 | 8.0 | 0x 0 | | ShMt | rt1 |
| rb2 | 0x0 | 112 | 67 | 217.7 | 0.075 | 420 | 7.0 | 0x 0 | | ShMt | rt1 |
| rb4 | 0x0 | 113 | 75 | 152.7 | 0.107 | 574 | 6.0 | 0x 0 | | ShMt | rt1 |

Return Trunk Detail Table

| Name | Trunk Type | Htg (cfm) | Clg (cfm) | Design FR | Veloc (fpm) | Diam (in) | H x W (in) | Duct Material | Trunk |
|------|------------|-----------|-----------|-----------|-------------|-------------|----------------|---------------|-------|
| rt1 | Peak AVF | 1260 | 1205 | 0.044 | 907 | <i>18.0</i> | <i>10 x 20</i> | ShtMetl | rrs1 |
| rrs1 | Peak AVF | 1260 | 1205 | 0.044 | 363 | <i>18.0</i> | <i>25 x 20</i> | ShtMetl | |
| rt1B | Peak AVF | 494 | 574 | 0.051 | 574 | 12.8 | 8 x 18 | ShtMetl | rt1A |
| rt1A | Peak AVF | 735 | 891 | 0.051 | 802 | <i>15.6</i> | <i>8 x 20</i> | ShtMetl | rt1 |

Bold/italic values have been manually overridden

